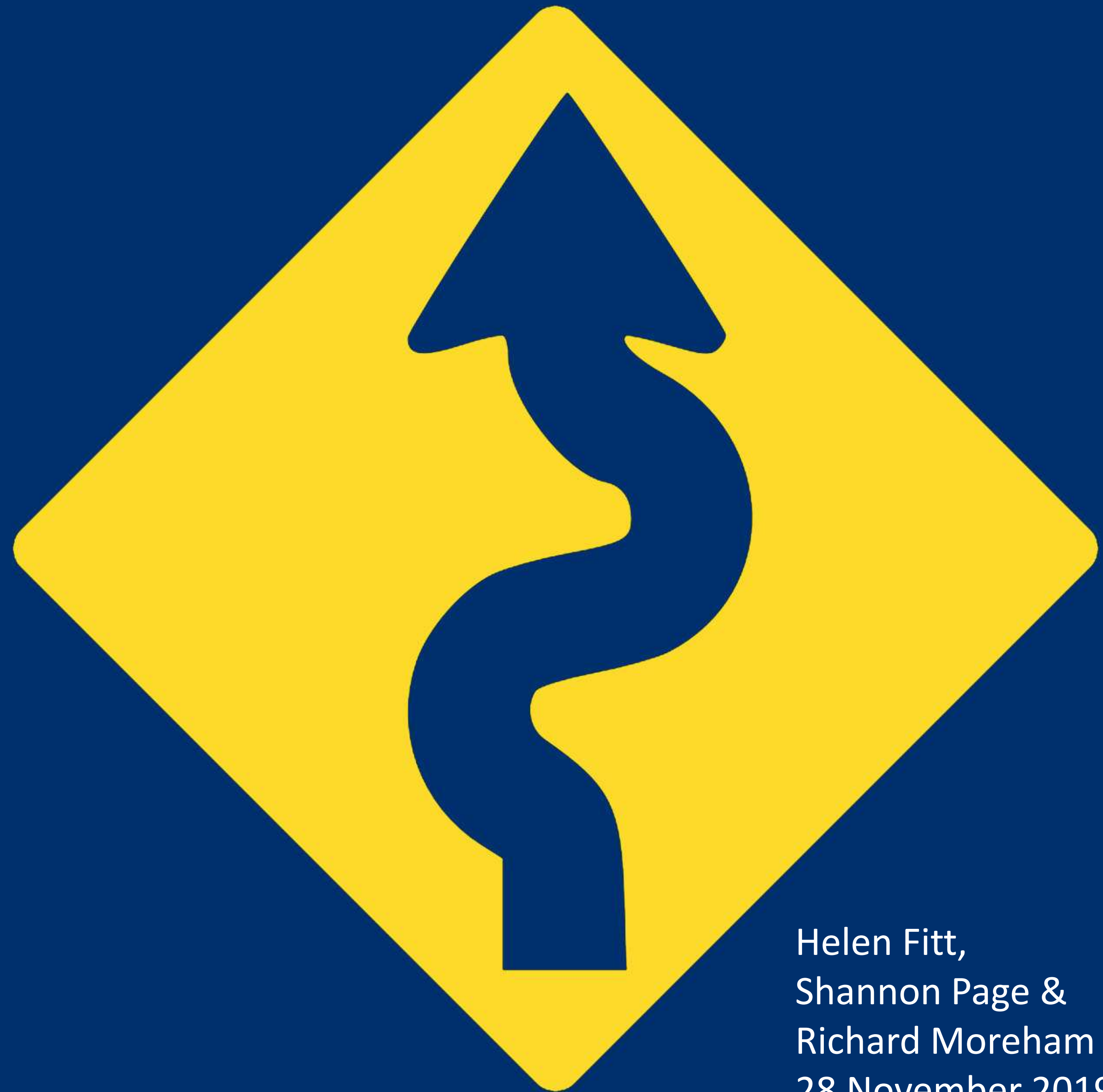


# Hairpins and blindspots

## Exploring the potential challenges of electric vehicle tourism



Helen Fitt,  
Shannon Page &  
Richard Moreham  
28 November 2019

# We should be considering the impacts of:

- ...increases in vehicle travel

- ...the geography of charging infrastructure

- ...changing transport equity

# Increases in vehicle travel

Shifting to driving an EV...

...makes driving feel cheap

...removes environmental guilt

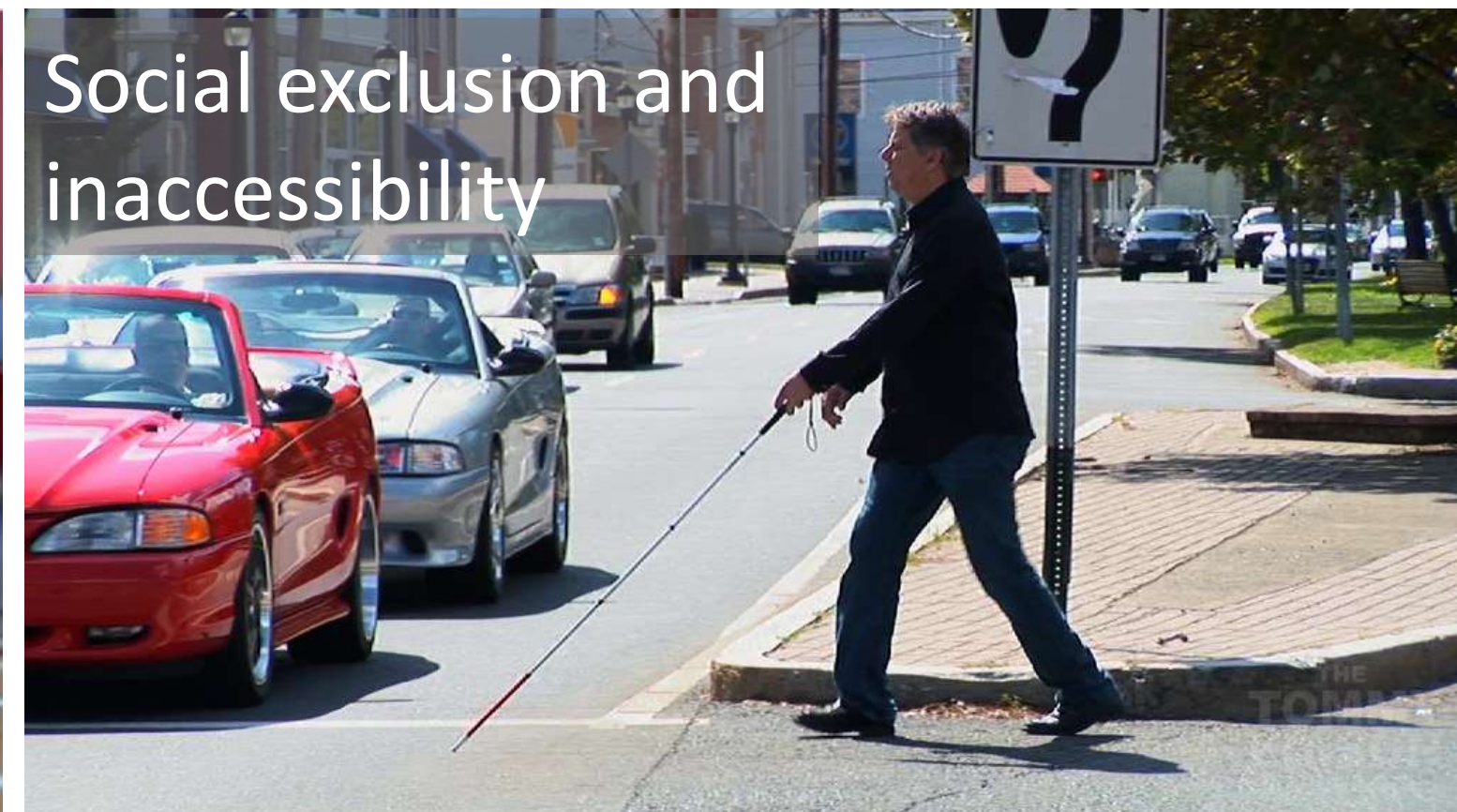
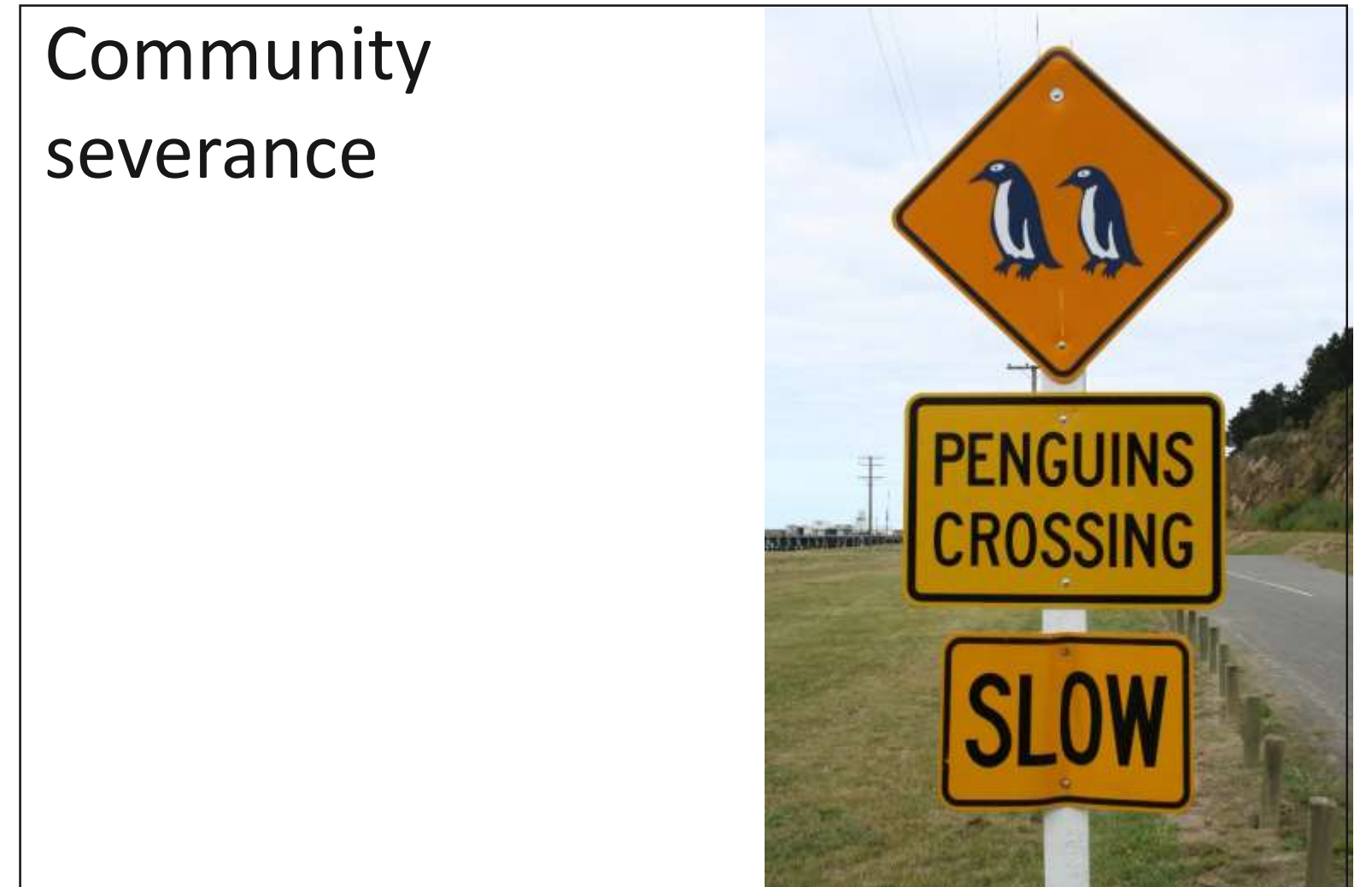
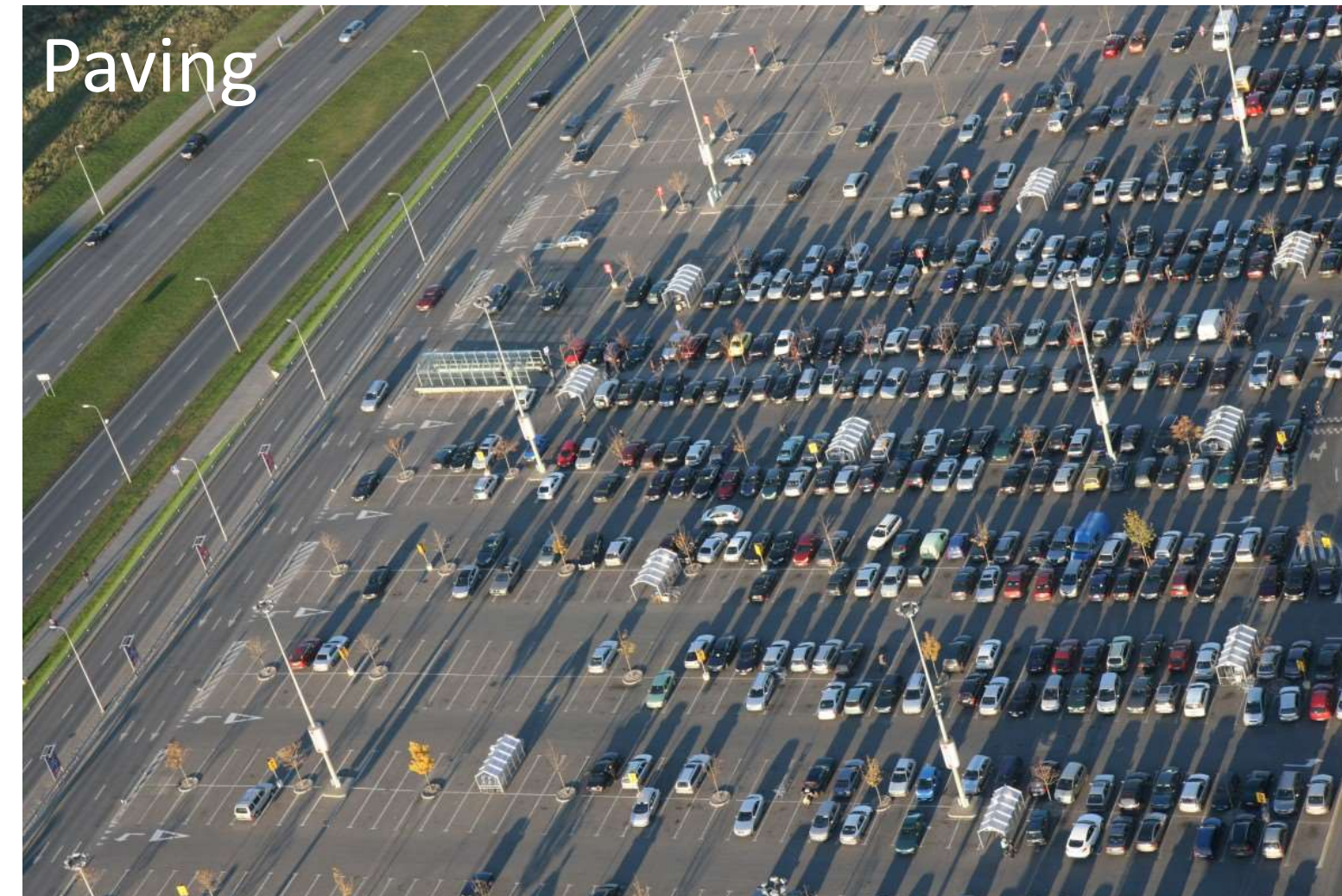
...makes driving more fun

Haustein, S., & Jensen, A. F. (2018). Factors of electric vehicle adoption: A comparison of conventional and electric car users based on an extended theory of planned behavior. *International Journal of Sustainable Transportation*, 12(7), 484-496. Retrieved from <https://doi.org/10.1080/15568318.2017.1398790>. doi:10.1080/15568318.2017.1398790





# Impacts of vehicle travel



# Geography of charging infrastructure



studio tdes, 2011,  
[www.flickr.com/photos/thedailyenglishshow/5585763492](https://www.flickr.com/photos/thedailyenglishshow/5585763492)



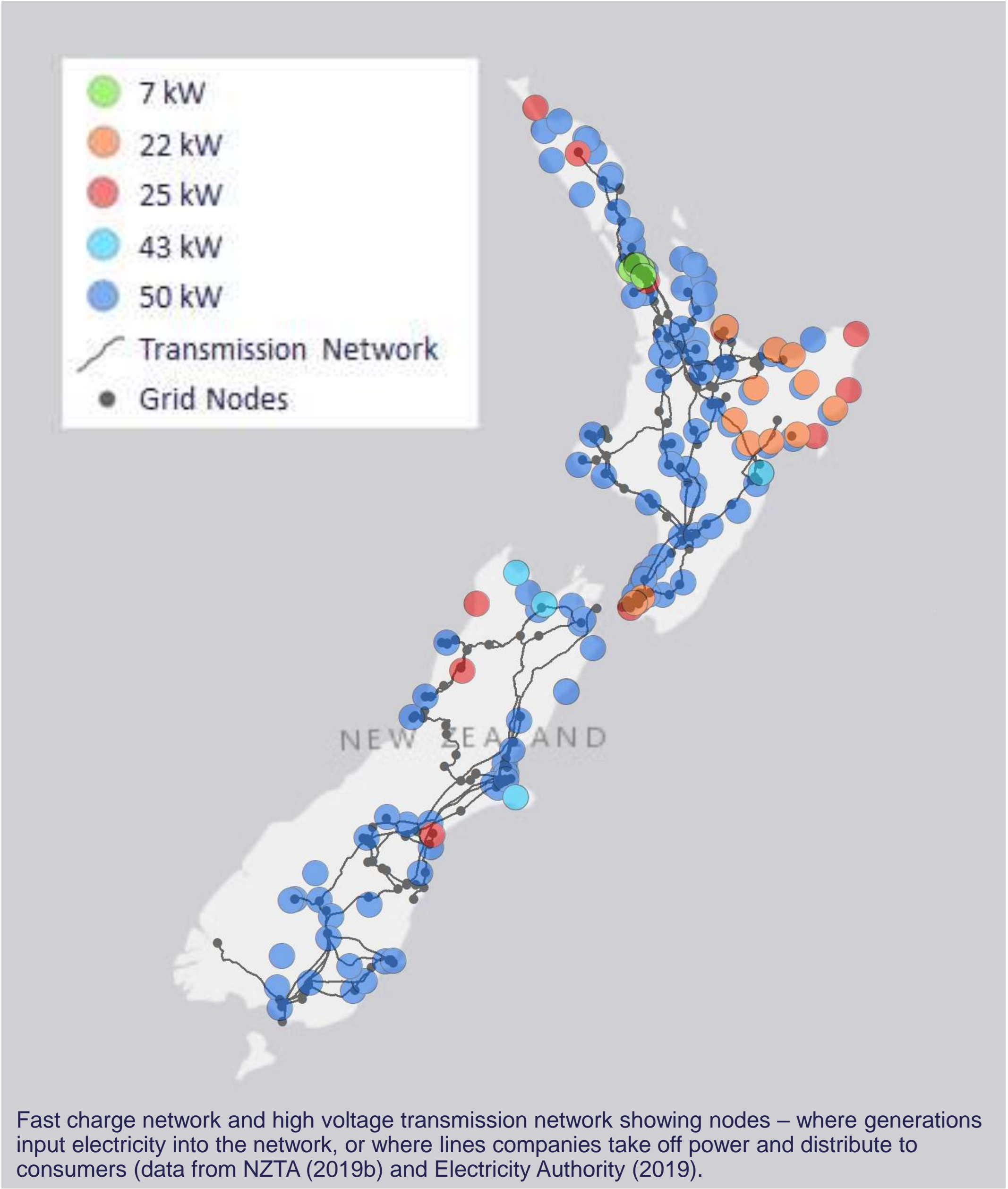
Apollo Motorhomes, 2011,  
<https://www.flickr.com/photos/apollorv/5493428264> [www.apollocamper.co.nz](http://www.apollocamper.co.nz)



Jonathon Colman, 2006,  
<https://www.flickr.com/photos/jcolman/306940672>



Smylers, 2013,  
<https://www.flickr.com/photos/smylers/8579115663>

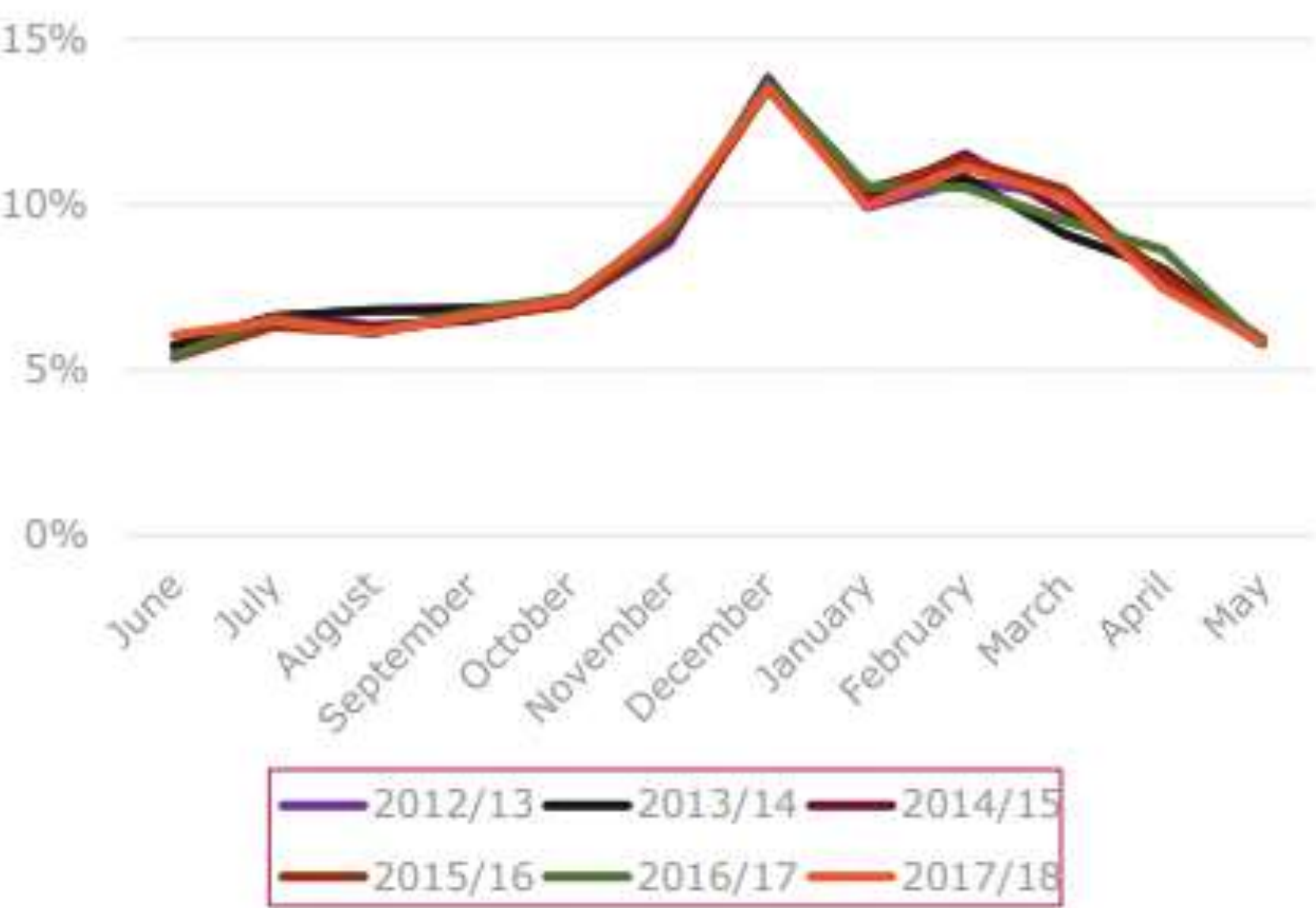


Fast charge network and high voltage transmission network showing nodes – where generations input electricity into the network, or where lines companies take off power and distribute to consumers (data from NZTA (2019b) and Electricity Authority (2019)).



# Peaks, troughs, and events

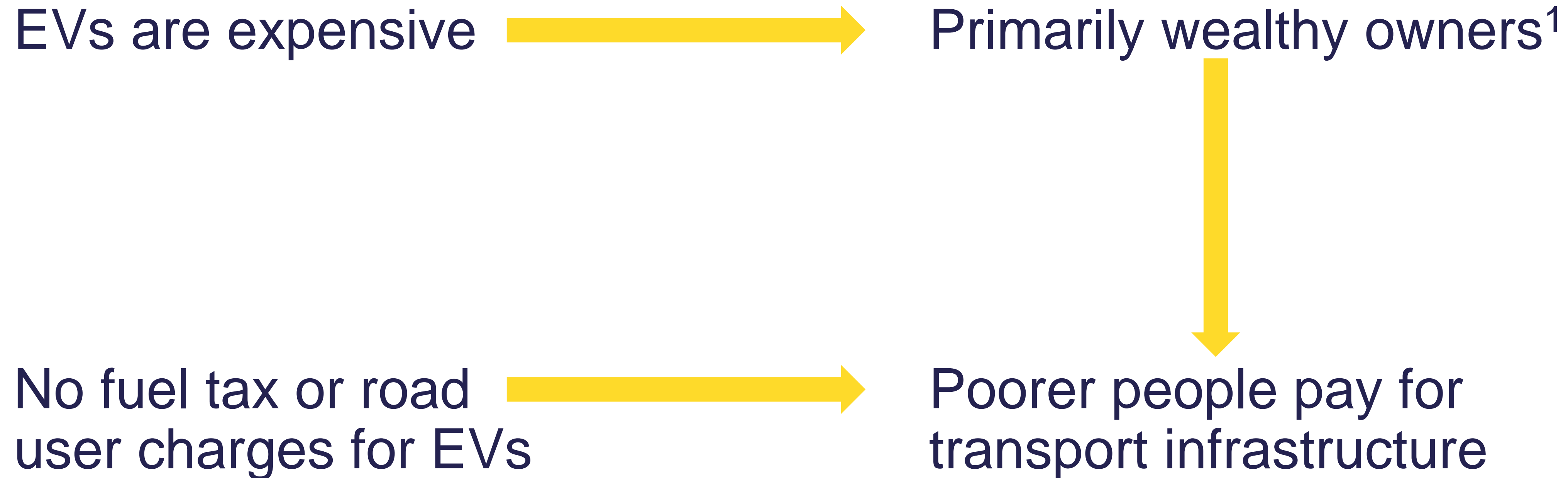
International visitor arrivals



Tourism Industry Association. (2018). Insight at a glance: Seasonality – December 2018. Available at: <https://tia.org.nz/assets/Uploads/5f2987bf9b/INSIGHT-AT-A-GLANCE-seasonality-Dec-2018FINAL2.pdf>



# Changing transport equity



<sup>1</sup> Haustein, S., & Jensen, A. F. (2018). Factors of electric vehicle adoption: A comparison of conventional and electric car users based on an extended theory of planned behavior. *International Journal of Sustainable Transportation*, 12(7), 484-496. Retrieved from <https://doi.org/10.1080/15568318.2017.1398790>. doi:10.1080/15568318.2017.1398790  
Halbey, J., Kowalewski, S., & Ziefle, M. (2015). *Going on a Road-Trip with My Electric Car: Acceptance Criteria for Long-Distance-Use of Electric Vehicles*, Cham.

# Where to from here?

- Look into the blindspots
- Make proactive choices
- Probably include a transport mix
- Probably include changes in transport practices

...but the first step is to understand the impacts of our choices.



Questions now?

...or later?

[helen.fitt@Lincoln.ac.nz](mailto:helen.fitt@Lincoln.ac.nz)





**LINCOLN**

**UNIVERSITY**

TE WHARE WĀNAKA O AORAKI