



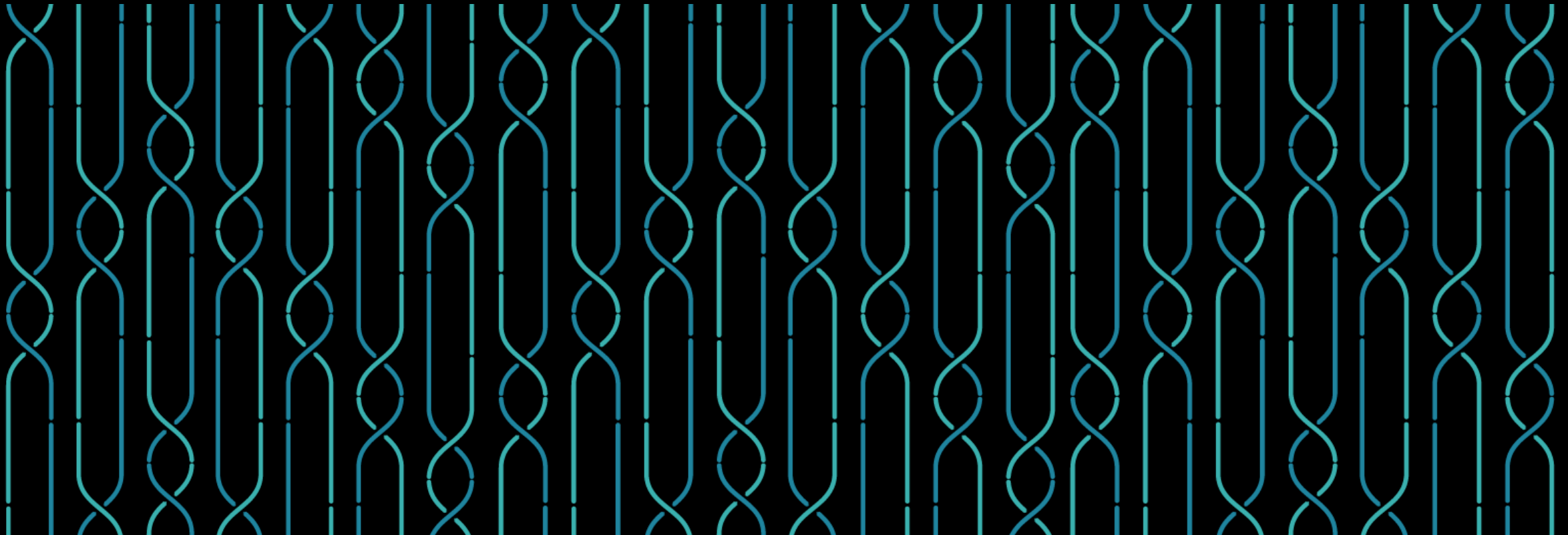
Te Kāwanatanga o Aotearoa
New Zealand Government



People-centred policy and practice

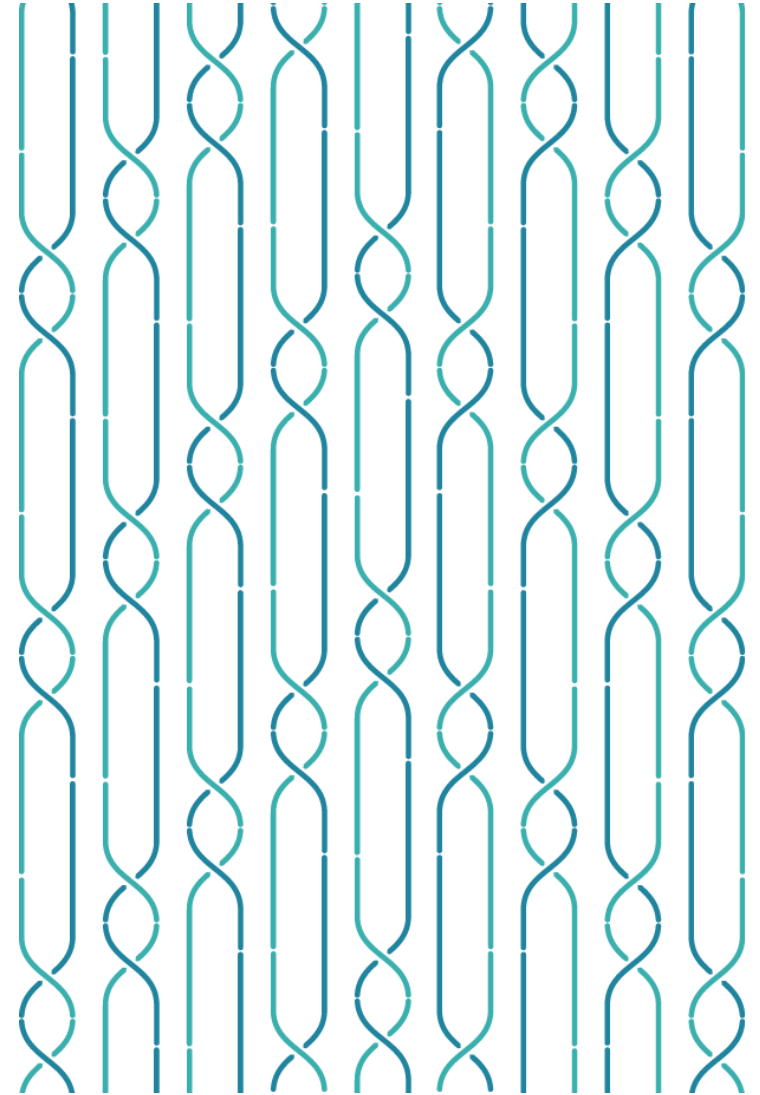
Integrating health and equity thinking into impact assessments

Kia Silvennoinen, NZAIA 1 November 2022



Content

- Context for Health in All Policies (HiAP) approach, and how the determinants of health impact equity & wellbeing outcomes
- Example: integrating health and equity thinking into urban development and planning
- How integrating health and equity thinking into impact assessment can place people at the centre of our planning, practice and policy-making.

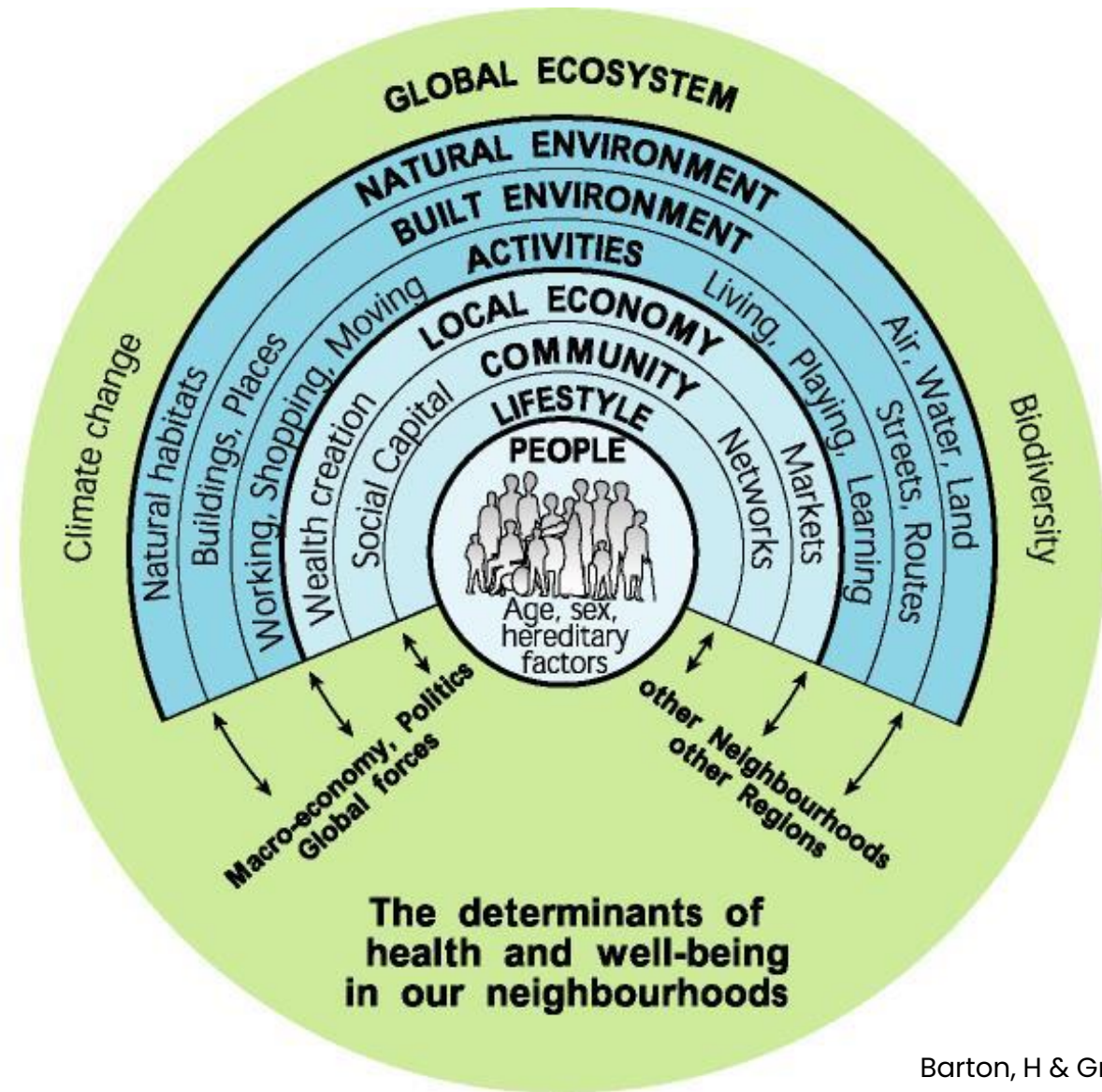




Health in All Policies (HiAP) approach to policy making and how the determinants of health impact equity and wellbeing outcomes

Determinants of health

- Range of personal, social, economic and environmental factors that influence health outcomes
- Demonstrate that factors outside the health system influence health outcomes
- Only 20% of health outcomes are associated with health service delivery – 80% of the determinants sit outside of health care
- Inequities in determinants underpin wider inequities in the society



Barton, H & Grant, M (2006)





Example: integrating health and equity thinking into urban development and planning

Placing people at the centre of our cities

- “If the purpose of urban planning is not for human health, then what is it for?”
 - Dr Maria Neira, World Health Organization Director from the Department of Environment, Climate Change and Health (2020).
- Our urban environments underpin equity: who has access to what, when, where and at what cost
- Classic examples: housing and transport inequities
- Implications on mental wellbeing, infectious disease, long term conditions outcomes



Strong people-centred urban policy can improve health outcomes

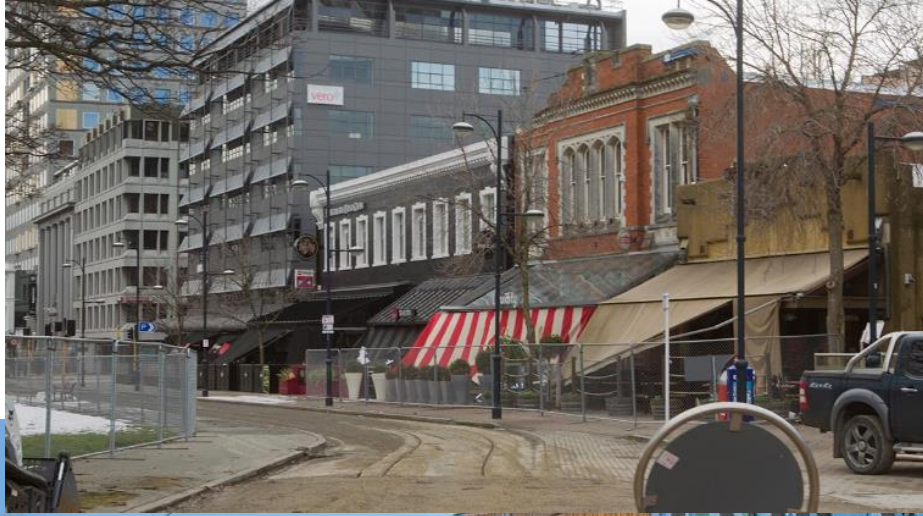


- Eg Amsterdam changes from 1970s until now



Aotearoa context: changes in urban landscape in Christchurch

- 2011 vs 2021 – pre and post earthquakes

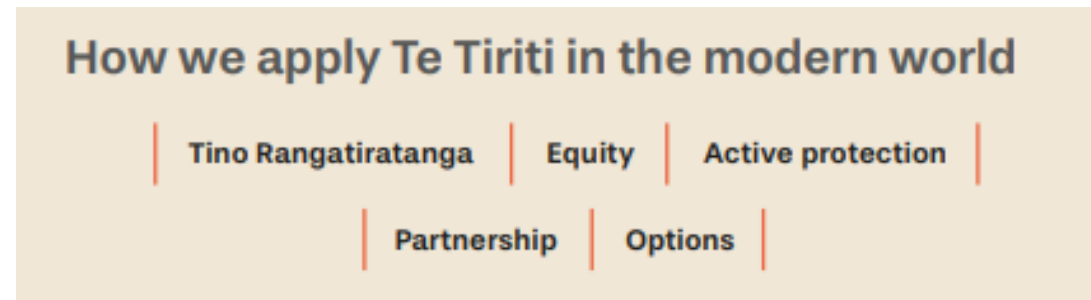




Integrating health and equity thinking into impact assessments is one way for people-centred planning, policy and practice

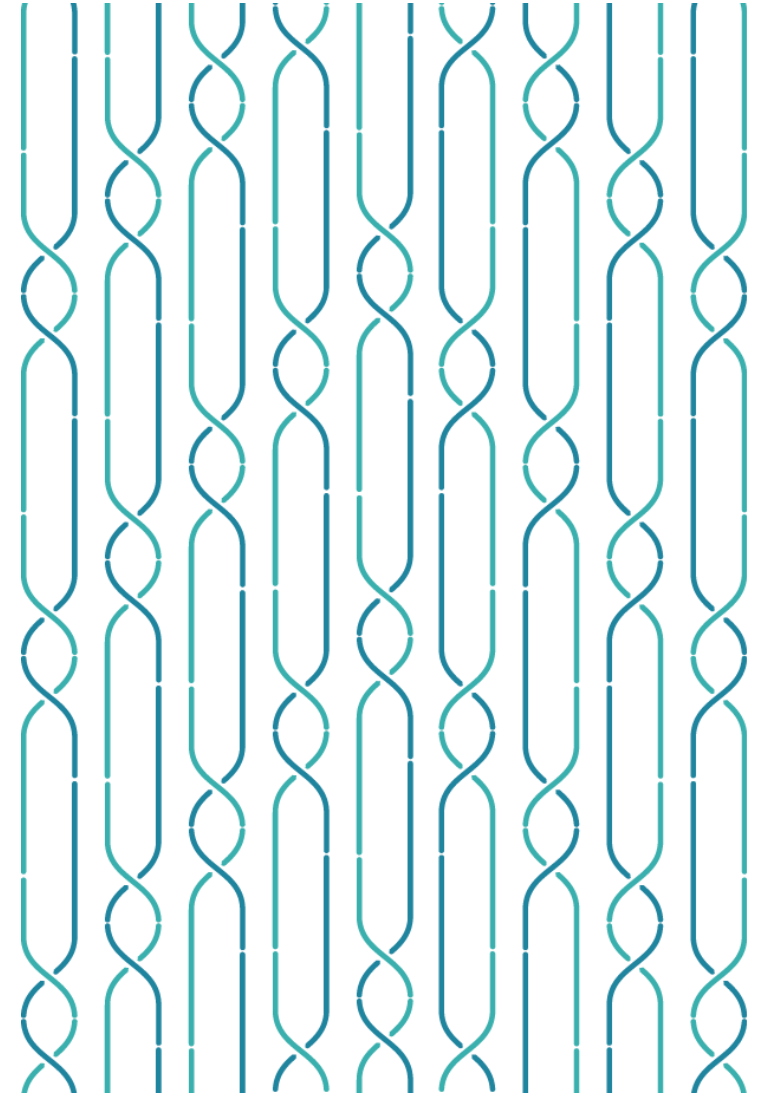
How to include wellbeing and equity thinking into IA?

- Key to integrate wellbeing and equity thinking into your existing impact assessment
- Existing tools:
 - Comprehensive list of tools at www.nziaia.org.nz/healthimpacts.html
 - HEAT (health equity assessment tool - www.health.govt.nz/publication/health-equity-assessment-tool-users-guide)
- Te Tiriti provides a framework for thinking about our project/policy or service outcomes for Māori
 - www.health.govt.nz/system/files/documents/pages/whakamaui-tiriti-o-waitangi-framework-a3-aug20.pdf
 - Manatū Hauora framework based on the articles & principles



Example questions for your IA

- How does this project enhance the wellbeing and equity of the local community?
- How are the local people impacted by this decision?
- How will this project/policy improve Māori wellbeing outcomes?
- What inequities exist in relation to wellbeing in this project/policy?
- Who is most advantaged and how? Who will benefit the most?
- How did inequities occur? What are the mechanisms by which the inequities were created, maintained or increased?
- What might the unintended consequences be?
- How will you know if inequities have been reduced?





Te Kāwanatanga o Aotearoa
New Zealand Government

