

Impact Assessment in New Zealand: Charting a Course for the Future: NZAIA 3 December 2015



**IN AN ERA OF SOCIAL
AND CULTURAL
DIVERSITY:
COMMUNITY-LED
DEVELOPMENT**



Social and cultural diversity - community-led development



Three examples of growing diversity

- Population diversity over the next 20-30 years
- Growing gap in wealth held by people in New Zealand
- Increasing appreciation of the increasing number of people with disabilities

Social and cultural diversity - community-led development Population



- **Super-diversity: 25% of residents are migrants**
- **2038: Maori, Asian and Pacific peoples will be 51% of NZ's population (up from 38%)**
- **2031: Auckland's population will be 2 million, up from 1.4million**
- **2031: 60% of NZ's population will live in Auckland**
- **2031: 50/67 local authorities will have fewer children**

Social and cultural diversity - community-led development



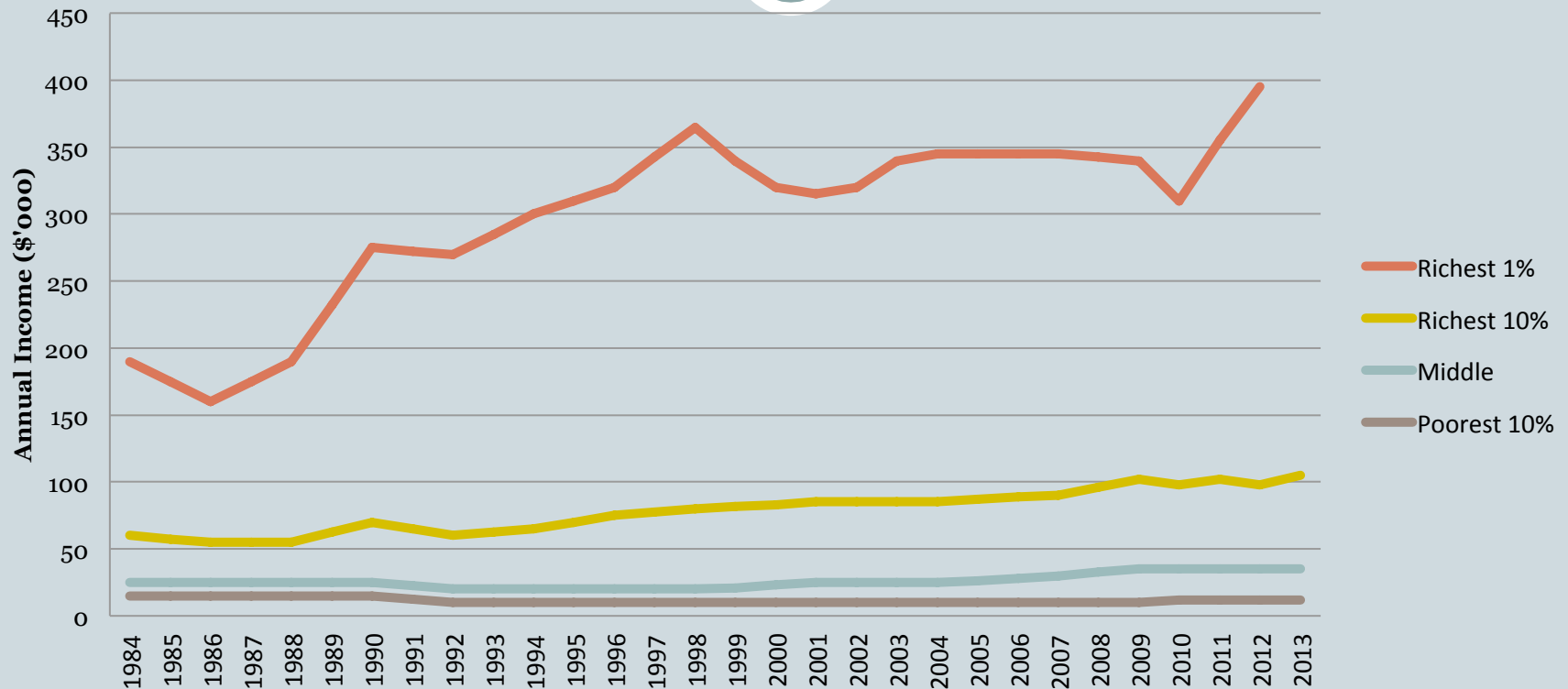
Social and cultural diversity - community-led development



- **Population diversity is predicted to increase - but already occurring**
- **Picture is of students at Mataura Primary school – a small rural town of 1500 in Southland**
- **Over last 10 years many farms have converted from sheep to dairying bringing new New Zealanders, especially from Africa and the Philippines**
- **Community composition, community leadership and community cohesion all affected**
- **Active community building approach taken by several in Mataura**

Social and cultural diversity – wealth

The Great Divergence: New Zealand 1984-2014



Social and cultural diversity – from disability to access and inclusion



- 25% of NZers live with a disability
- 60% of disabled unemployed
- 75% don't need extra support to work
- Be.Employed; Be.Leadership; Fab 50; Be.Welcome- worked with 875 businesses to assess readiness
- The 'Yellow Dollar' – especially access to Tourism. In Australia Access market estimated at \$5.2bn

Social and cultural diversity - community-led development



- **Disability often a hidden area of diversity**
- **Also frequently treated as a problem rather than an opportunity**
- **Variability in ability will increase as the New Zealand population ages**
- **Looking through a lens of ‘accessibility, building economic opportunity and inclusion’ are keys to shifting the exclusion often currently experienced by people with disability**
- **Be Accessible is one of the key initiatives leading in this area**

Berhampore Primary School

- 240 pupils
- 20 ethnicities
- 60% non-English speaking
- Welcomes pupils with disabilities



Social and cultural diversity – Neighbours-neighbourhoods



Mary-Jane Rivers: Delta Networks

Social and cultural diversity - community-led development: Local matters



Social and cultural diversity - community-led development



The Blue Pallet Pavilion is one of the many community gathering places created by the residents of Christchurch, New Zealand, on the vacant lots resulting from the Canterbury earthquakes.

Social and cultural diversity - community-led development



- **Several examples in New Zealand where local communities are taking action and leading on things that matter**
- **Berhampore School in Wellington is the key community connector, actively involving people from all of the 20+ ethnicities in the school/community, acting as a magnet for kids with disabilities – and has turned children’s educational achievement from extremely low to very high through building on community strengths and an approach of active community engagement, partnership and fostering community leadership**

Social and cultural diversity - community-led development



- A 'Treasure Hunt' – connecting neighbours, finding assets in Pt Chevalier in Auckland, having fun and acting as a basis of establishing a community vision and plan – has led to multiple repeats of this approach, and is one example of an asset-based, community-led approach
- Project Lyttelton and TimeBank where the basis of development is people sharing skills and building social and economic capital and environmental protection
- Gap fillers in Christchurch after the earthquakes an example of spontaneous, supported creativity

The Power of Co-



Social and cultural diversity - community-led development The Power of Co-



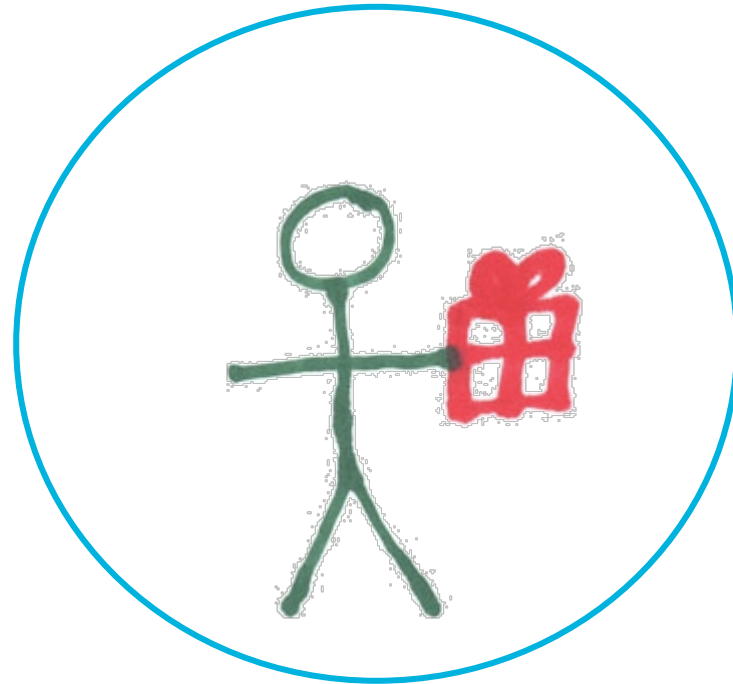
- **When problems are more complex and multi-layered the power of working together is becoming evident and more practised – often when there is a reduction in natural resources and competing users**
- **The approach taken in Opotiki, for economic and social development combined with protecting natural resources through aquaculture, is another type of example**
- **It is community-led, initially by Iwi, then joined by the local authority and now involving whole region local government, local and regional business leaders, local residents and now central government**

Social and cultural diversity - community-led development: Opportunities for Impact Assessment



- If current trends and predictions occur, the look and make up of Aotearoa New Zealand will be markedly different in 15-20 years time, eg population make-up, wealth levels, increasing visibility and participation of those with disabilities – all within the context of climate change
- A parallel emerging trend, currently under the radar but about to surface, is the increasing number of locally-led initiatives ranging from eg small energy projects and TimeBanks through to whole of community transformation which are tackling the social and cultural diversity and provide a guiding light for successfully addressing expected trends
- They are based on the characteristics identified in the next slide and provide an opportunity for Impact Assessment around the integration of social, environmental, health and economic issues and a fuller, less transactional and technical approach to community engagement

Every individual has gifts of the head, heart and hands



**No throw away people, contributors not clients;
Build on strengths and assets
Engaging with rather than consultation
Relationships, social capital, inclusion, innovation**

Social and cultural diversity - community-led development: Opportunities for Impact Assessment



Resources:

Inspiring Communities re Community-Led
Development: www.inspiringcommunities.org.nz/

Be Accessible: www.beaccessible.org.nz/

Berhampore School: www.berhampore.school.nz

Treasure Hunts: www.site.ouramazingplace.org.nz/

Opotiki: www.odc.govt.nz/harbour-project/

Project Lyttelton: www.lyttelton.net.nz/

New Economics Foundation: www.neweconomics.org/