

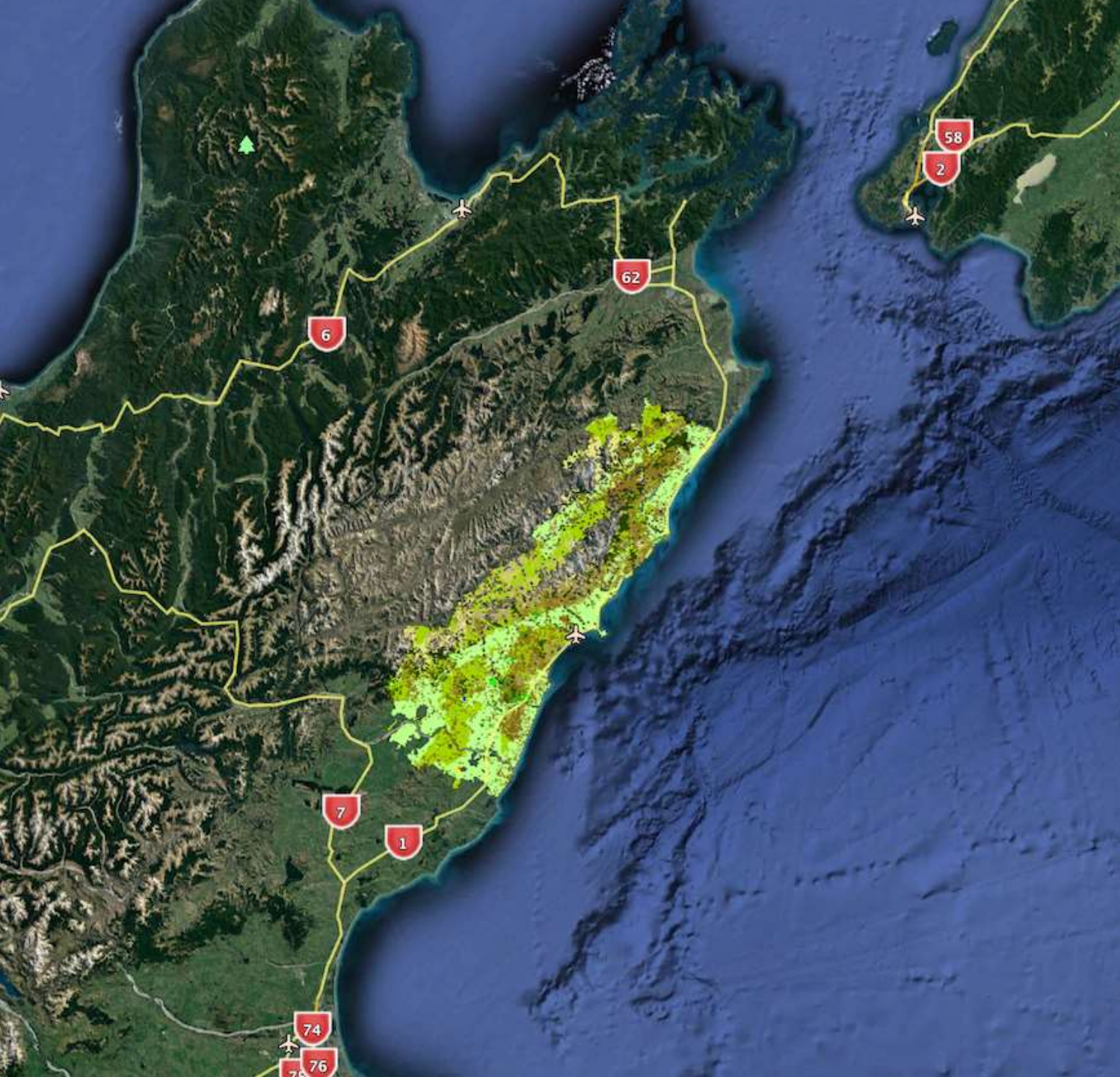
# Post Quake Farming Project

NEW ZEALAND ASSOCIATION OF IMPACT ASSESSMENT

28<sup>TH</sup> NOVEMBER 2019







# Project Area



Ministry for Primary Industries  
Manatū Ahu Matua







# Genesis of PQQF Project

---

Magnitude 8 earthquake, 16 November 2016.

Substantial and wide-ranging land damage.

Damage to farm houses and buildings, fences, water systems and access tracks.

Sudden unexpected loss of rural water schemes and loss of road access.

Longer-term support package required to manage land recovery – recognising skills and knowledge of farmers.

MPI Earthquake Recovery Fund - PQQF one of several projects.



# Challenges with establishment

---

Set up at the beginning of 2018 by Beef + Lamb New Zealand.

The variety of actors (agencies and rural community leaders) involved.

Constant change in community situation and needs - road access and insurance settlements.

Difficulty aligning needs with activities.

Most farmers not ready to engage with a project so soon after the event.

Project revised in spring-summer 2018 - adaptation to a physically, economically and socially complex hill and high-country farming environment.



# Objective – Build a prosperous, ethical, and enduring regional economy around multiple land-based enterprises across the Post Quake Farming Project Area



## Optimisation

- Optimal returns from land resources in the immediate term



## Farm Future

- Develop new enterprises to optimise use of land resources in the long term



## Promotion

- Effectively link the story of our land and our people to our markets



## Wellbeing

- Look after our people so they can have a prosperous future



# Advancing Project Work

---

Activities likely to result in positive change?

- Extension program on farm-forestry integration.
- Potential of native forestry resource (carbon and biodiversity).
- Wilding pines.
- Horticulture suitability assessment.
- Agri-tourism and 'telling our story'.

Structured interviews with 50 farmers in the Project Area during the winter of 2018. Surveys at events and formal or informal interviews to monitor needs and perceptions.

Impact Assessment - Project effectiveness and accountability.







# Natural Heritage and Biodiversity

---

## Outcomes sought:

1. Establish a community-based approach to manage biodiversity:
  - Extension activities to support understanding.
  - Template to assess, develop actions, and establish monitoring.
  - Strategy to support active management at a multi-property scale.
2. Develop knowledge of what could be achieved if resources for active management of regenerating native forest.

Principles – based approach to manage political, regulatory, and social complexity.



# Lessons Learned

---

Be adaptive. Acknowledge problems or mistakes and actively manage to develop better solutions.

Ongoing assessment and response through delivery.

Communication. Community of interest. Governance Group. Project sponsor. Stakeholders and agencies.

Objectives are essential to maintain project focus. Has project work been successful or is on track to success?

Conflicts of interest – very common but also a common cause of project failure.

The right people involved – understanding of Project vision, capacity and capability, ability to connect to community.



# Implications - Impact Assessment

---

Pressure on farming communities to change means there will be more projects of this nature underway in New Zealand and elsewhere in the next few years.

Farms and rural communities are complex. Impacts of one activity will be enhanced by various other factors:

- Changing carbon price and ETS;
- Environmental regulation in the context of the hill and high-country environment;
- Tourism and district councils.

Constant change over time mean Project Management practice must be similarly dynamic.

Impact Assessment more important but also more challenging.

# Further Information

---

<https://postquakefarming.co.nz/>