



NZAIA 2014 Conference  
Assessing and Managing the Impacts of  
Transport Infrastructure Development

# IMPACT MONITORING & MANAGEMENT

## The Challenge of a New Paradigm

MacKays to Peka Peka Expressway Experience

Robert Schofield, Boffa Miskell Limited  
Malory Osmond, Beca Limited

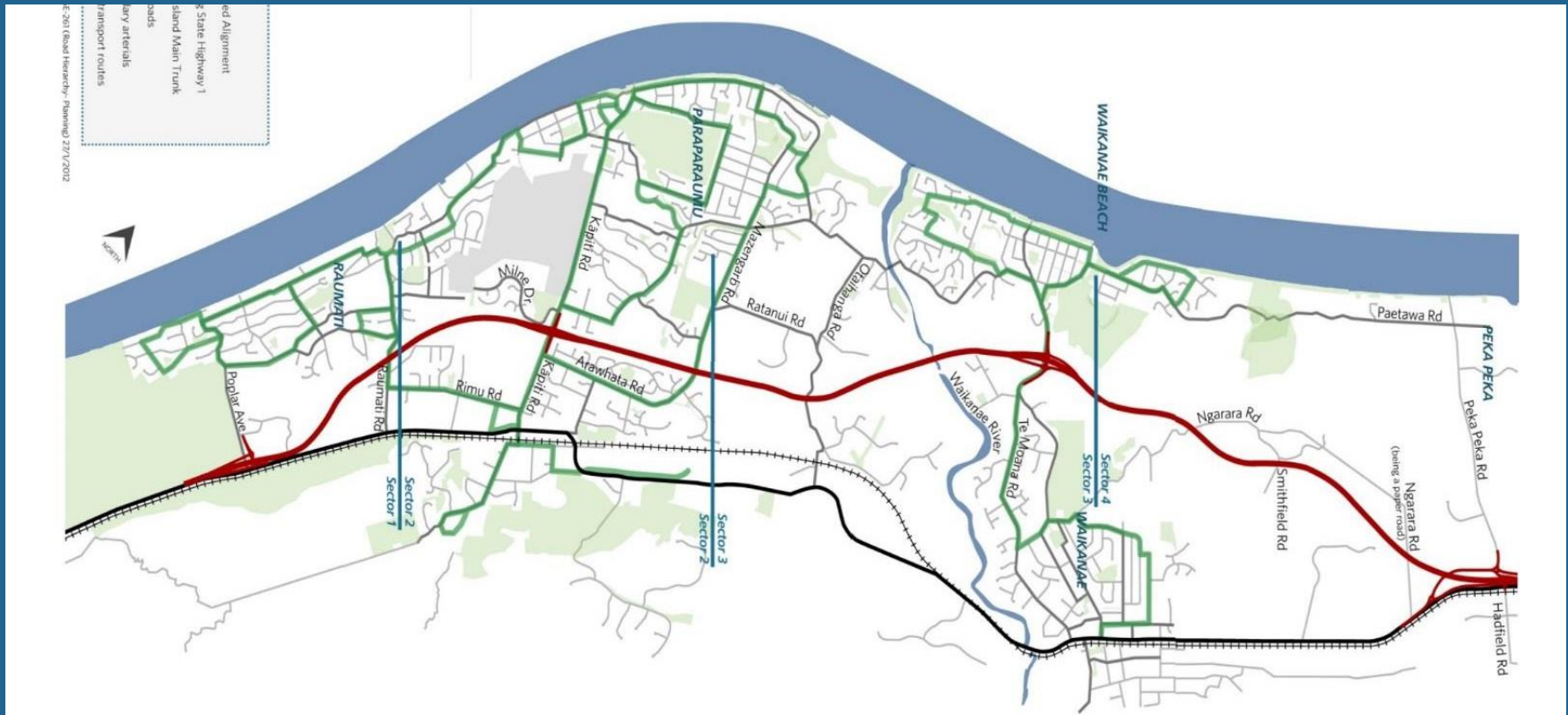
# Introduction

- Location and context
- Impact Assessment
- Consultation
- Cultural Impact
- Conditions
- Implementation
  - Management plans
  - Social and community monitoring
  - Ecological monitoring
  - Cultural monitoring and archaeology
- Lessons Learnt

# MacKays to Peka Peka Expressway – location



# MacKays to Peka Peka Expressway – local context



# The Challenge of a New Paradigm

- The challenge of committing the delivery of promises through robust impact assessment, community consultation, monitoring and adaptive management

# Impact Assessment

- Comprehensive impact assessment process
- 3 staged design process: route analysis through to detailed alignment and design
- Wide range of input and analysis from experts





# Impact Assessment

- Range of specialist assessments
  - Geotech investigations through to people movement analysis
- Practical limit to extent of analysis and research
  - E.g. groundwater analysis
- Needed adaptive management regime



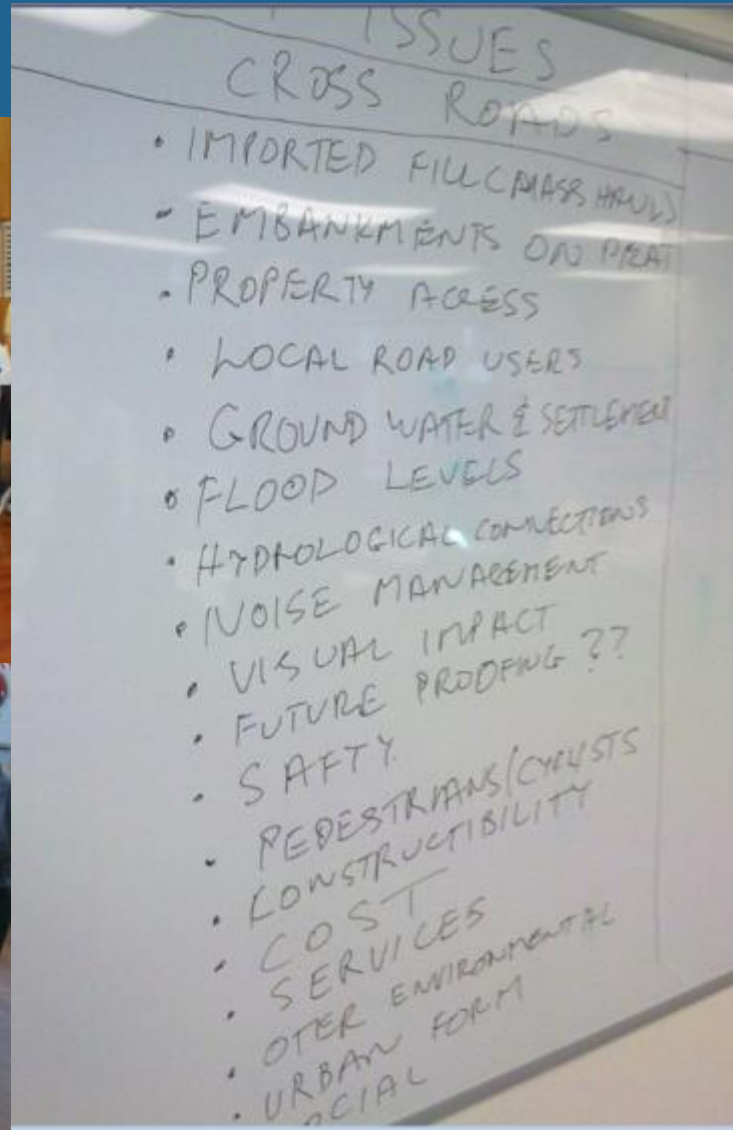
# Consultation

- Assessments informed by consultation 2010-12
  - Info centre
  - Two Expos
  - Online presence
  - Stakeholder engagement
- MCA methodology used for making key decisions
  - Informed by issues raised during consultation





# Consultation



# Cultural Impact



- Significant cultural issues
  - Significant wāhi tapu for Te Ati Awa ki Whakarongotai at pivotal location along route
  - Preceding local arterial road proposed through centre
  - Continuous engagement throughout process: MOU
- Cultural Impact Assessment prepared by iwi
  - Monitoring
  - Mitigation

# Conditions

- Drawing on previous roading projects
- Informed by Kāpiti Coast District Council input as Alliance partner
- Input from experts and their recommendations
- Informed by consultation feedback
- Finalised through BoI process + expert conferencing





# Conditions

- Conditions establish comprehensive management framework:
  - Monitoring regime
  - Adaptive management
  - Iwi involvement
  - Community and neighbourhood consultation
  - Management plan certification
  - Post-construction sign-off



# Implementation

# Challenging environment...

## ...with a robust set of monitoring conditions

Residential

Freshwater  
fish

Lizards

Sediment  
discharges

Surface water

Hazardous  
Substances

Wāhi Tapu  
site

Air quality

Contaminated  
land

Wetlands

Urban

Archaeology

Noise and  
vibration

Settlement

Stormwater

Contaminated  
water

Traffic

Valued  
vegetation

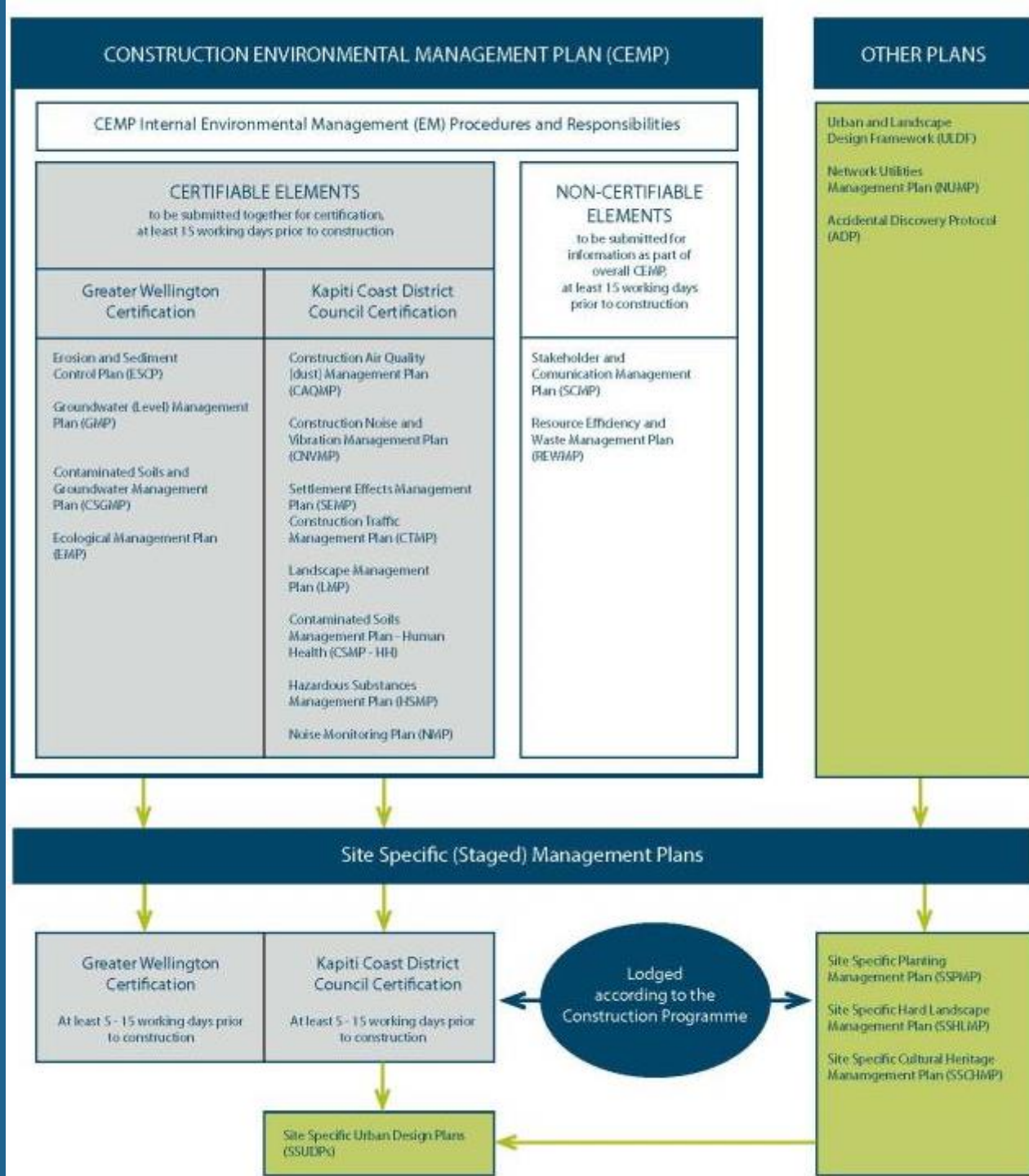
Fern birds  
and pipits

Groundwater



# Management Plans

- 16 High Level Management Plans
- Site Specific Management Plans





# Management Plans – the challenges

- Consultation with third parties
  - Iwi
  - Community Groups
- Managing Council 'scope' of review
  - What do the conditions say?
- Certification timeframes – out of our hands
  - Managing expectations
- Dispute resolution timeframes impractical





# Social and Community Monitoring

- Stakeholder and Communication team
  - Manages all public relations, face to face meetings, media, brand management, complaints
  - Working with iwi, community, neighbours and the media to foster two-way positive community engagement
- Neighbourhood Impact Forums
- Community Liaison Groups
- Planned events



# Communication is key

- Website
- eNewsletter Expresslane
- Coastlands Information Centre
- Community media updates
- Flyers and letter drops
- 24/7 phone line
- Email address



Flickr photostream





# Ecological Monitoring



Pipit



Kanuka



Drains are still streams!



Common skink



North Island fernbird



Mahoe & forest



Riparian vegetation



Common gecko



Grey duck



Wetlands



Native fish



Green gecko







# Cultural Monitoring and Archaeology



- Fostering and maintaining good relationships
- Permits to dig – archaeologists and two iwi reps to monitor works
- 16 archaeology authorities

# Monitoring challenges and lessons learnt

- Securing an experienced Environmental Manager
- Loss of Bol knowledge + new personnel
- Double the team
- The ground shakes... vibration
- Murky waters...sediment!
- Listen to the Community
- Adapt monitoring methods to the environment
- Interpretation of conditions... and management plans
- Changes to conditions
- Management plan amendments

# Conclusion

- Still an evolving process but has produced better environmental outcomes and processes than previous projects, with positive community feedback



