

NZAIA 2018

Whakatu Arterial Link

28 November 2018

Presented by Stephen Daysh

The Northern Arterial

Whakatu Arterial Link

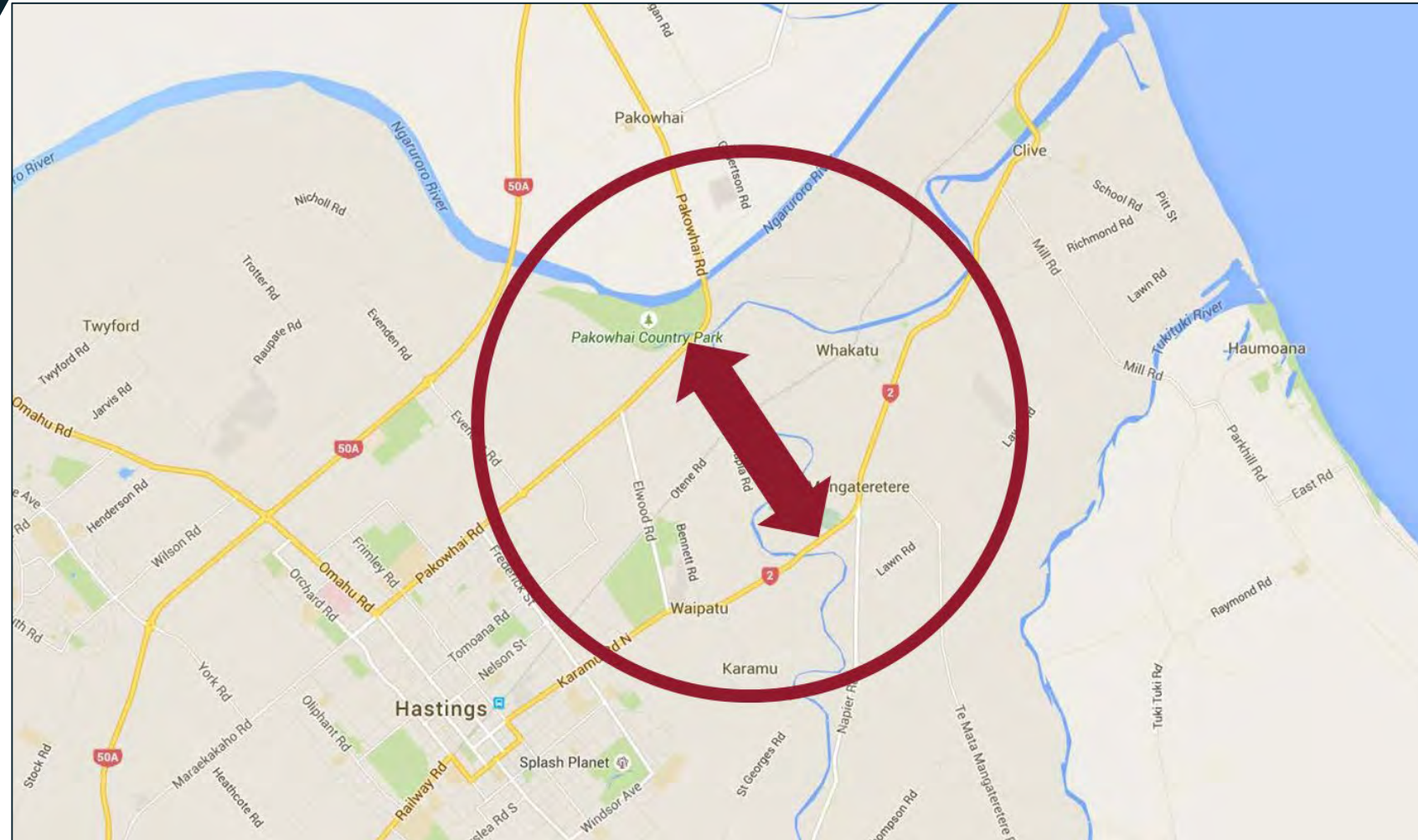


Key Privy Council Finding

“The Treaty of Waitangi guaranteed Māori the full exclusive and undisturbed possession of their lands and estates, forests, fisheries and other properties they desired to retain. While, as already mentioned, this cannot exclude compulsory acquisition (with proper compensation) for necessary public purposes, it and the other statutory provisions quoted do mean that special regard to Māori interests and values is required in such policy decisions as determining the routes of roads. Thus, for instance, their Lordships think that if an alternative route not significantly affecting Māori land which its owners desire to retain were reasonably acceptable, even if not ideal, it would accord with the spirit of legislation to prefer that route.”

Privy Council Appeal No. 43 of 2000

Blank Page Restart



A Community

MITCHELL
DAYSH



Whakatu Arterial Link

A School

MITCHELL
DAYSH



A Railway Line

MITCHELL
DAYSH



A Stream, a Regional Park and an Orchard

MITCHELL
DAYSH



A Bus Company

MITCHELL
DAYSH



Reflecting the Community

MITCHELL
DAYSH



"The EBD process was one that aligned well with tikanga Māori. It acknowledged Māori cultural values from the outset and supported a 'kanohi ki te kanohi' or 'face to face' consultation process with mana whenua which was critical in identifying the preferred option for the arterial. The process was inclusive and encouraged contributions from all the key stakeholders toward identifying the optimal solution. I would happily recommend this process for any future RMA developments."

Bayden Barber, Kaumatua for Enquiry by Design process

Whakatu Arterial Link

Workshoppin g for a Plan

MITCHELL
DAYSH

WORKSHOP 1

27 March 2012

Process &
Problem Scoping

WORKSHOP 2

3 April 2012

Options
Development

WORKSHOP 3

14 April 2012

Walk / Drive Over

WORKSHOP 4

17 April 2012

Information Gaps
and Studies

WORKSHOP 5

8 May 2012

Invited Experts

WORKSHOP 6

16 May 2012

Evaluation Matrix
and Outcome

WORKSHOP 7

29 May 2012

Confirm Draft
Report

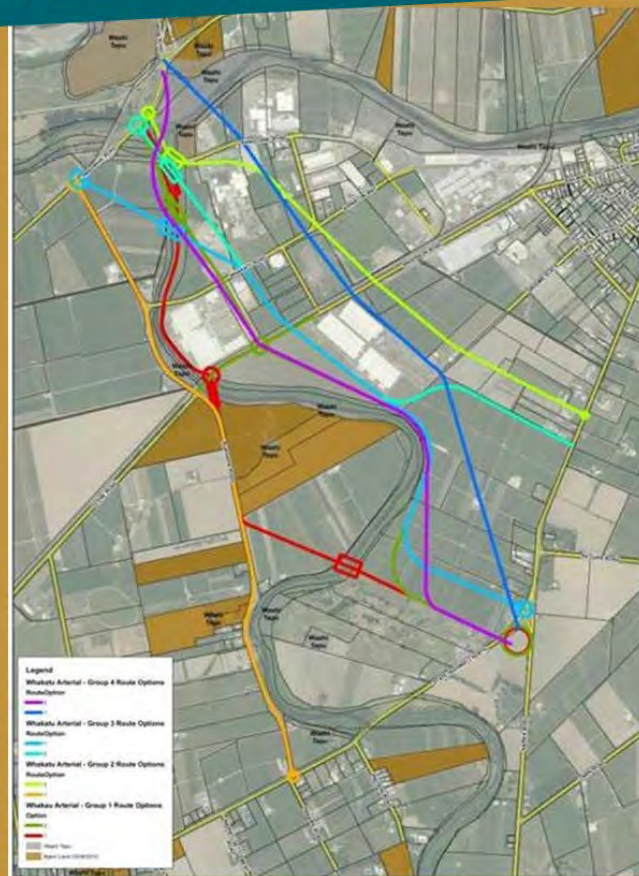
WORKSHOP 8

17 July 2012

Public Feedback
and Final Report

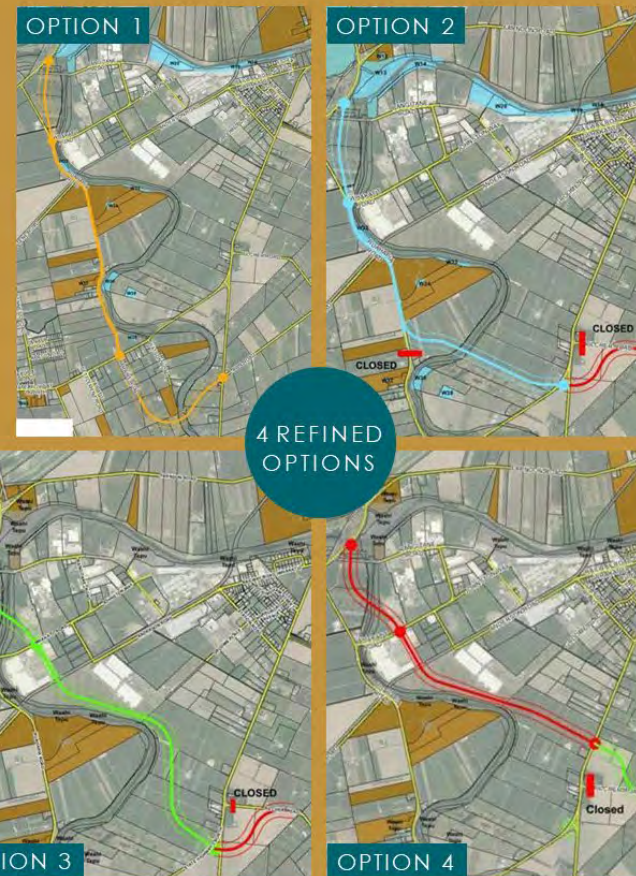
Shortlisting options

EVOLVING THE PREFERRED CORRIDOR

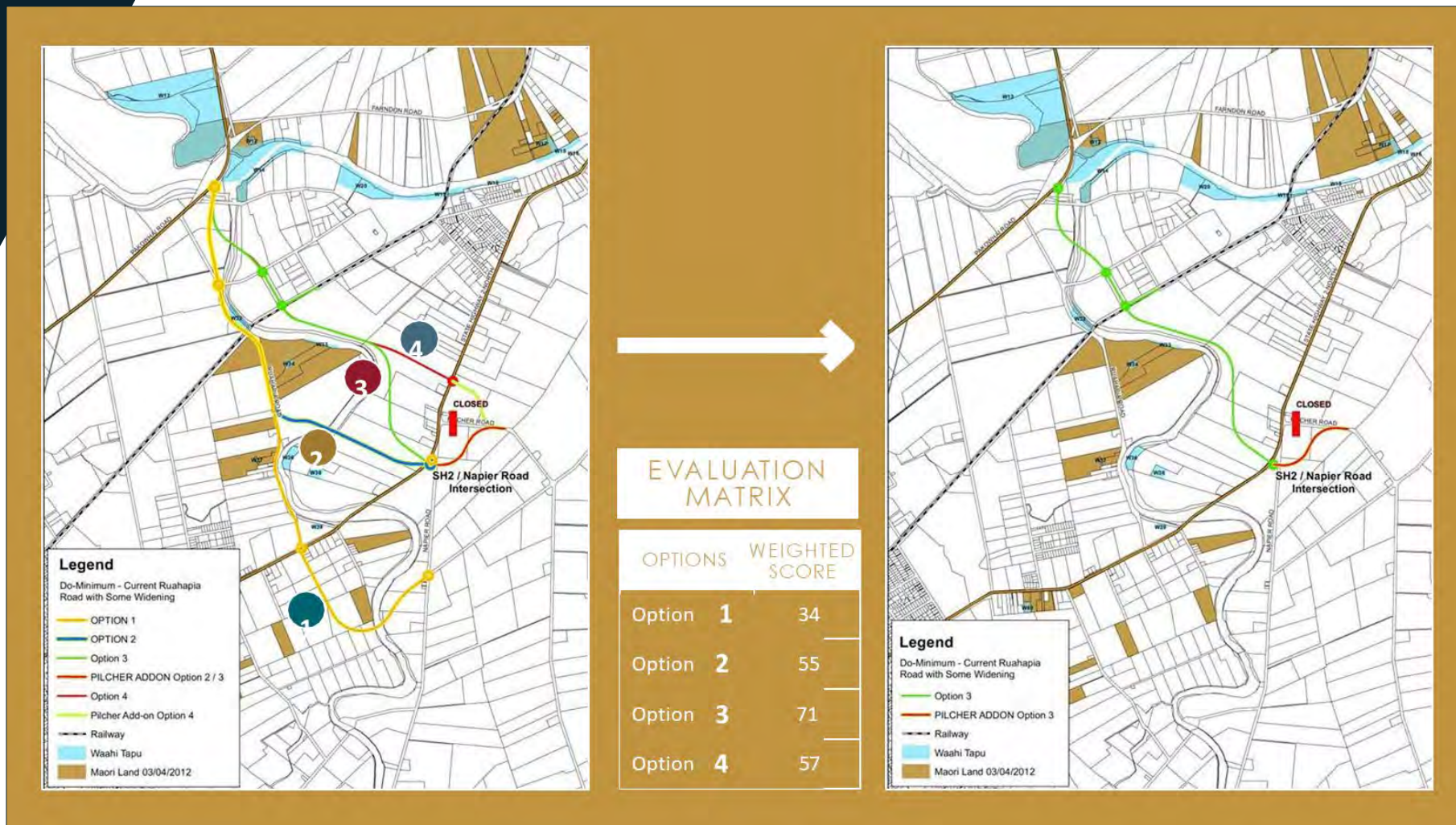


SHORTLISTED
TO 4 OPTIONS

Though discussion,
information and
engineering rigour



Weighing Up the Way Forward



Communication as the Road Unfolds

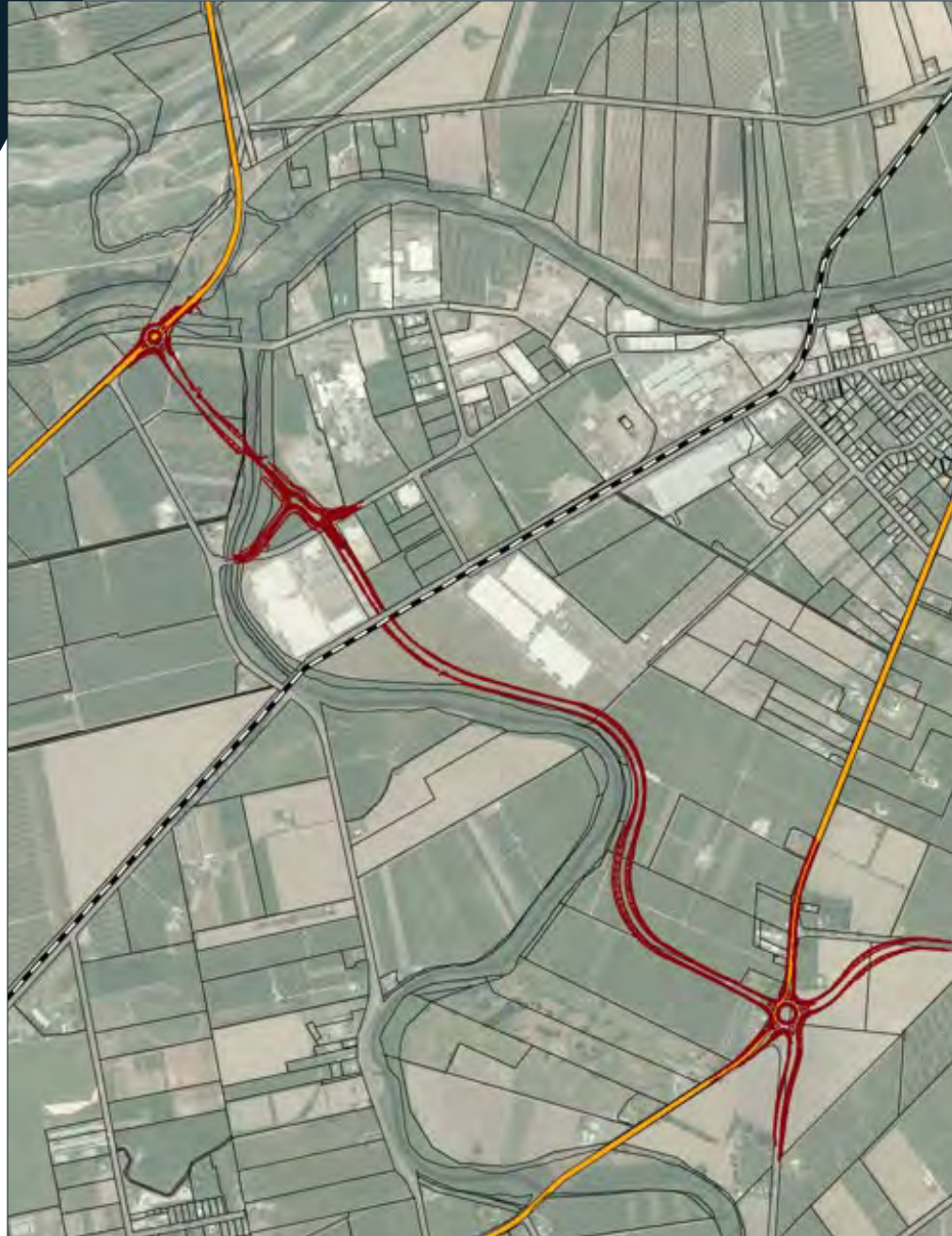
MITCHELL
DAYSH

“...we are satisfied that the Council has taken an appropriately robust and considered approach in progressing the NOR, and has met the relevant tests... In particular Mr. Apple supports the steps that have been taken by the Council to understand and address the effects on its operations.”

CEO of Scales Corporation

Construction on the Way

MITCHELL
DAYSH



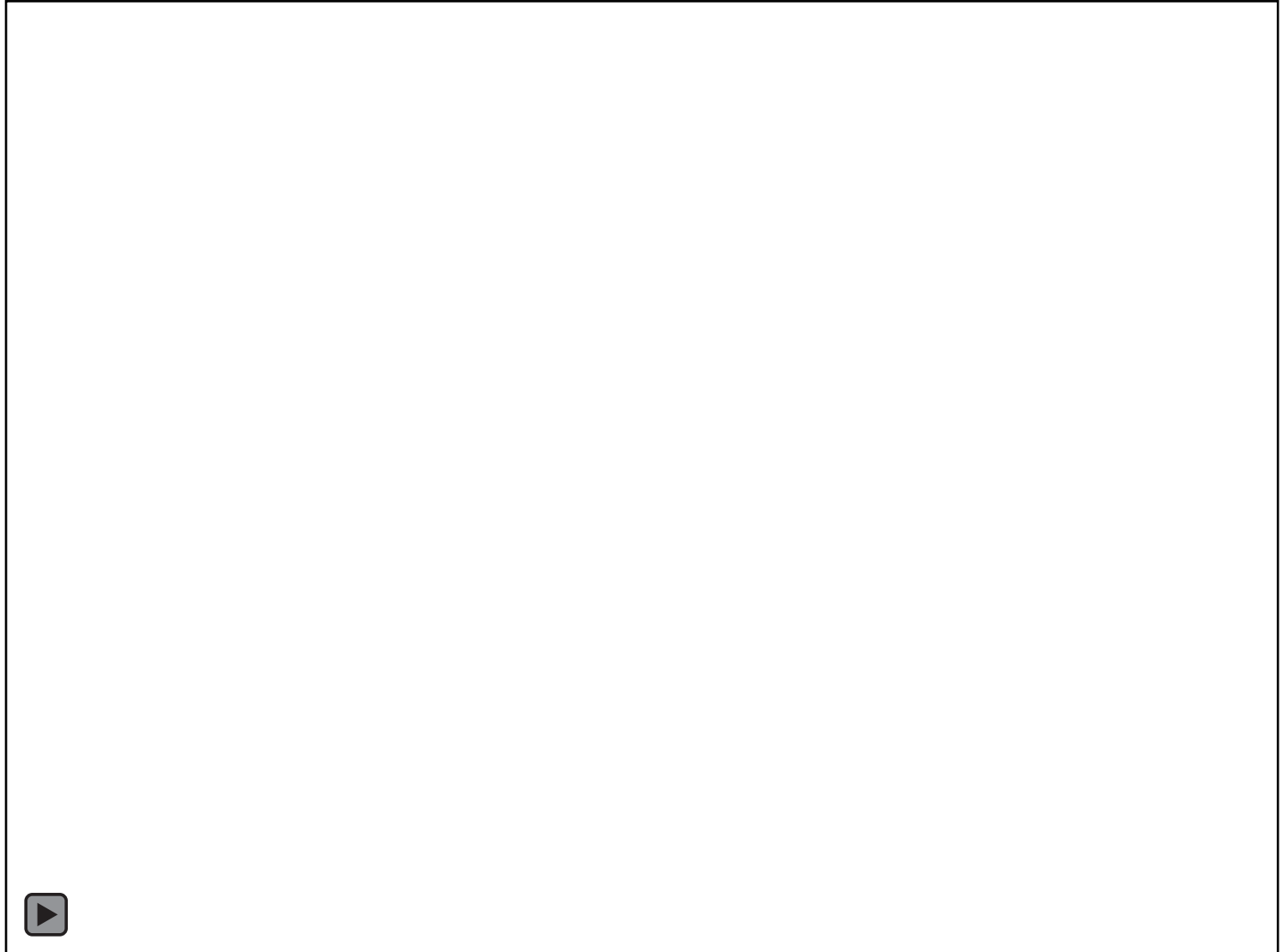
Whakatu Arterial Link

Built and Moving

MITCHELL
DAYSH 

Completed

November 2018



Whakatu Arterial Link



Thank You



Stephen Daysh

stephen.daysh@mitchelldaysh.co.nz