

Just coasting along? Choppy SEAs and the topology of risk

Suzanne Vallance

NZAIA, Lincoln University

Topographies of risk

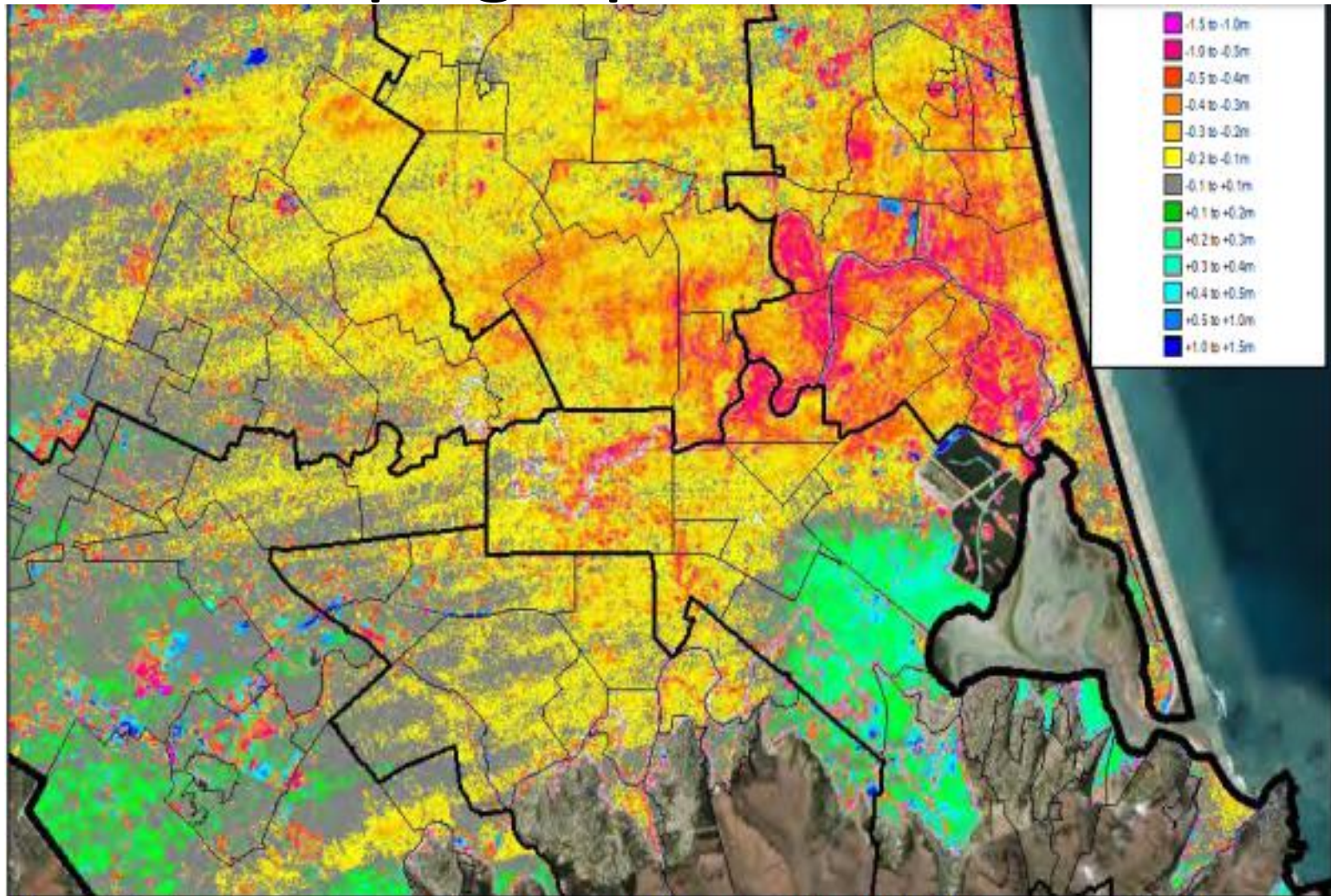
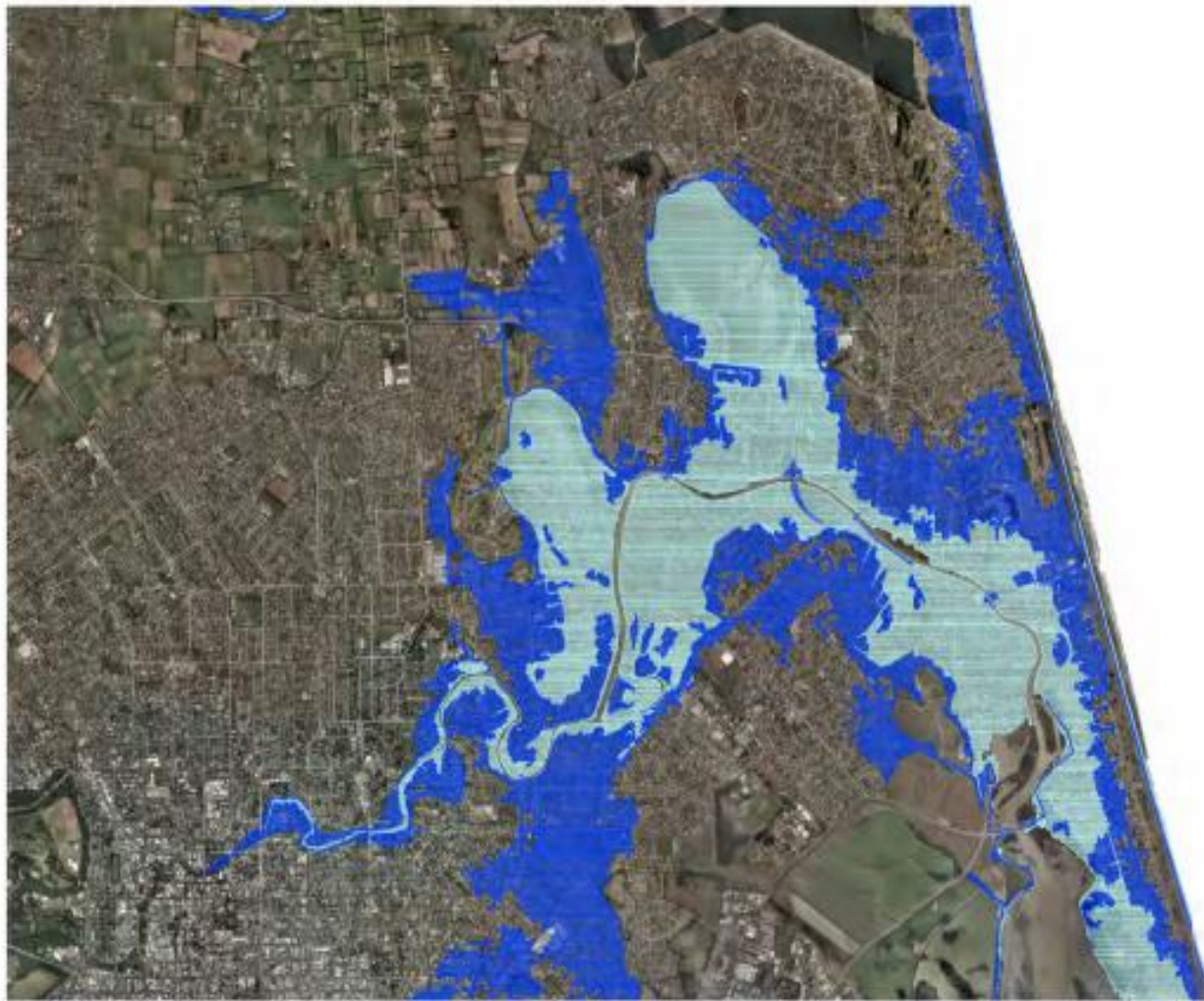



Figure 3-4 Summary of changes in ground elevation between 2003 and 2011 (source: T&T, 2013)




Aerial photo sourced from Christchurch City Council

L:\61707\AvonRisingWater\61707\fig4-17.dwg P12 20/11/2013 8:49:46 am 1:50,000 0.00 19.00

LEGEND

 Area impacted by the 1% AEP Inundation event (3.3m = 1% NEP tide of 1.9m and 1.0m sea level rise with 0.4m freeboard)

 Area impacted by shoreline retreat due to passive inundation (2.2m = Mean high water springs of 1.2m and 1.0m sea level rise)

Levels reduced to Jyttafon Vertical Datum



Tonkin & Taylor
Environmental and Engineering Consultants
Level 1, 525 Cameron Road, Tauranga
www.tonkin.co.nz

DRAWN	AMC	Jul.13
CHECKED	MCI	Nov.13
APPROVED	MCI	Nov.13
CAPFILE \\61707 fig4-17.dwg		
SCALE AT A4 300		
1:50,000		
PROJECT No.	61707	

CHRISTCHURCH CITY COUNCIL
EFFECTS OF SEA LEVEL RISE
AVON RIVER
Site Plan

FILE No.	Figure 4-17	REV	0
----------	-------------	-----	---

Topography

- Graphic
- Describes and depicts place
- “Objectively”
- Technical
- “Assessments” + “Objectives” = “plans/policies”

- Maps +
- “To increase the communities [sic] resilience to sea level rise”
- = City-wide Sea Level Rise Adaptation Strategy

- What’s wrong with that?

Topology

- Ordering principles that makes spaces places
- Grammar is the ordering principle that makes these words into a sentence
- Ambiguous

The rabbit eats roots and leaves



The rabbit eats, roots and leaves

Bourriaud “The Radicant” 2009, p. 79

- “The major aesthetic phenomenon of our time is surely the intertwining of the properties of space and **time**, which turns the latter into a **territory** every bit as tangible as the hotel room where I am sitting right now... Today’s **art** seems to negotiate the creation of new types of space by resorting to a geometry of **translation: topology.**” (p.79)



<https://anticap.wordpress.com/2013/04/24/after-neoliberalism/>

JOIN NOW

CCRU will continue the fight on your behalf. Any amount you give will be committed to CCRU's mission to prevent potential losses of property value that the recently dropped Coastal Hazard Policy would have on your property.

We need to ensure the new policy won't have a similar effect.

To proceed effectively involves commissioning reports and studies from Coastal Engineers, Climate Scientists, Planners, Economists and Environmental Lawyers.

Losing is not an option. With your financial support we can win.

- *"**Imagination** is more important than knowledge. For knowledge is limited, whereas **imagination** embraces the entire world...giving birth to evolution."*
- Albert Einstein



Emma Anna's Image

- **HOW DO WE BUILD A BETTER MOUSE TRAP?**
- **VS**
- **WHY ARE THERE SO MANY MICE?**
- The definition of a problem shapes the solutions that can be found

LRFWG

- New lake management + floods = *^*&^#%*&
- 10 years of abnormal rainfall + a decade of neglect
- Equity and equality