

# NZAIA Conference 2022

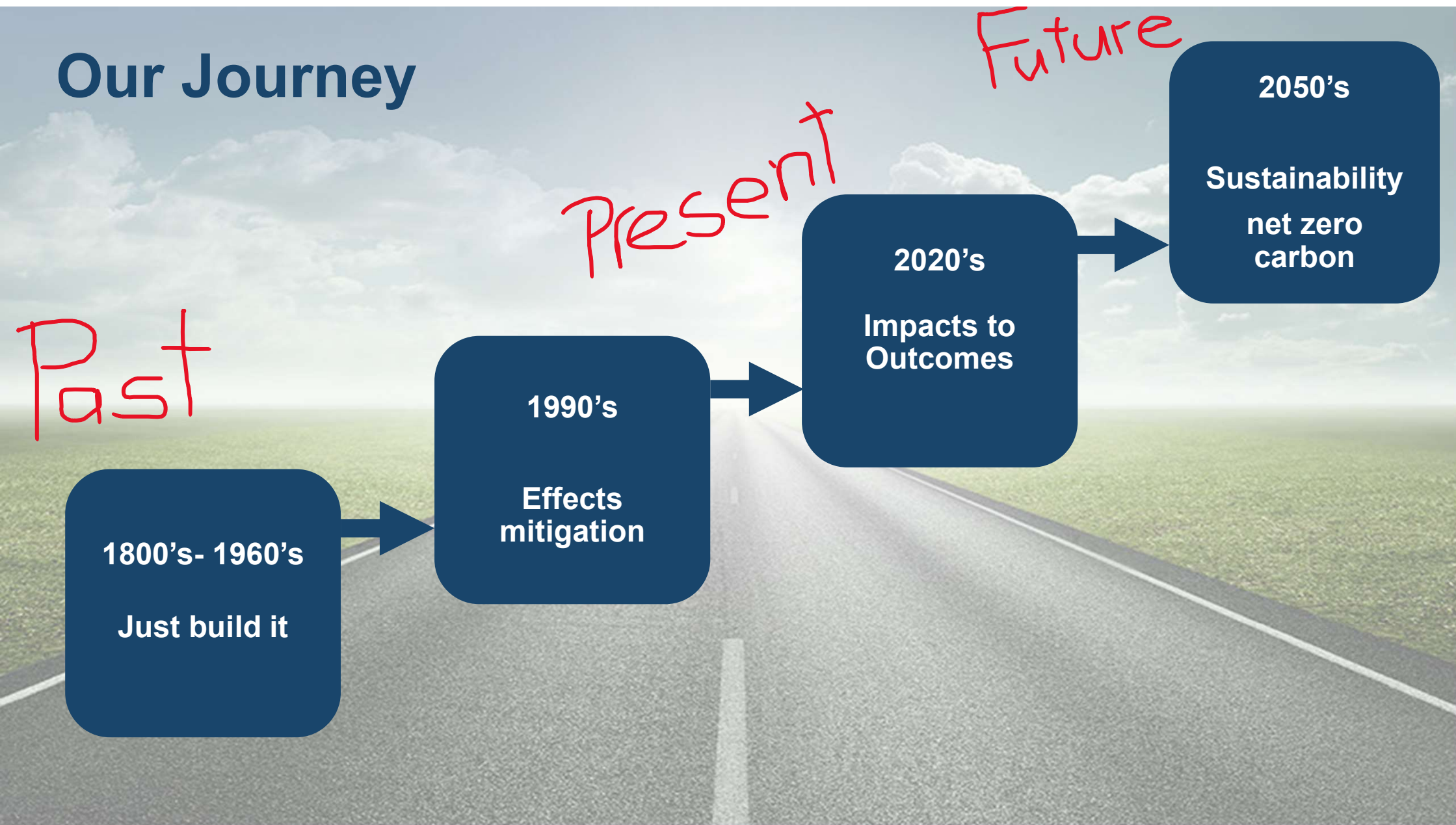
From Policy to Practice

Our Sustainability and Social Outcomes  
Journey

Rebekah Pokura-Ward  
Julie Boucher



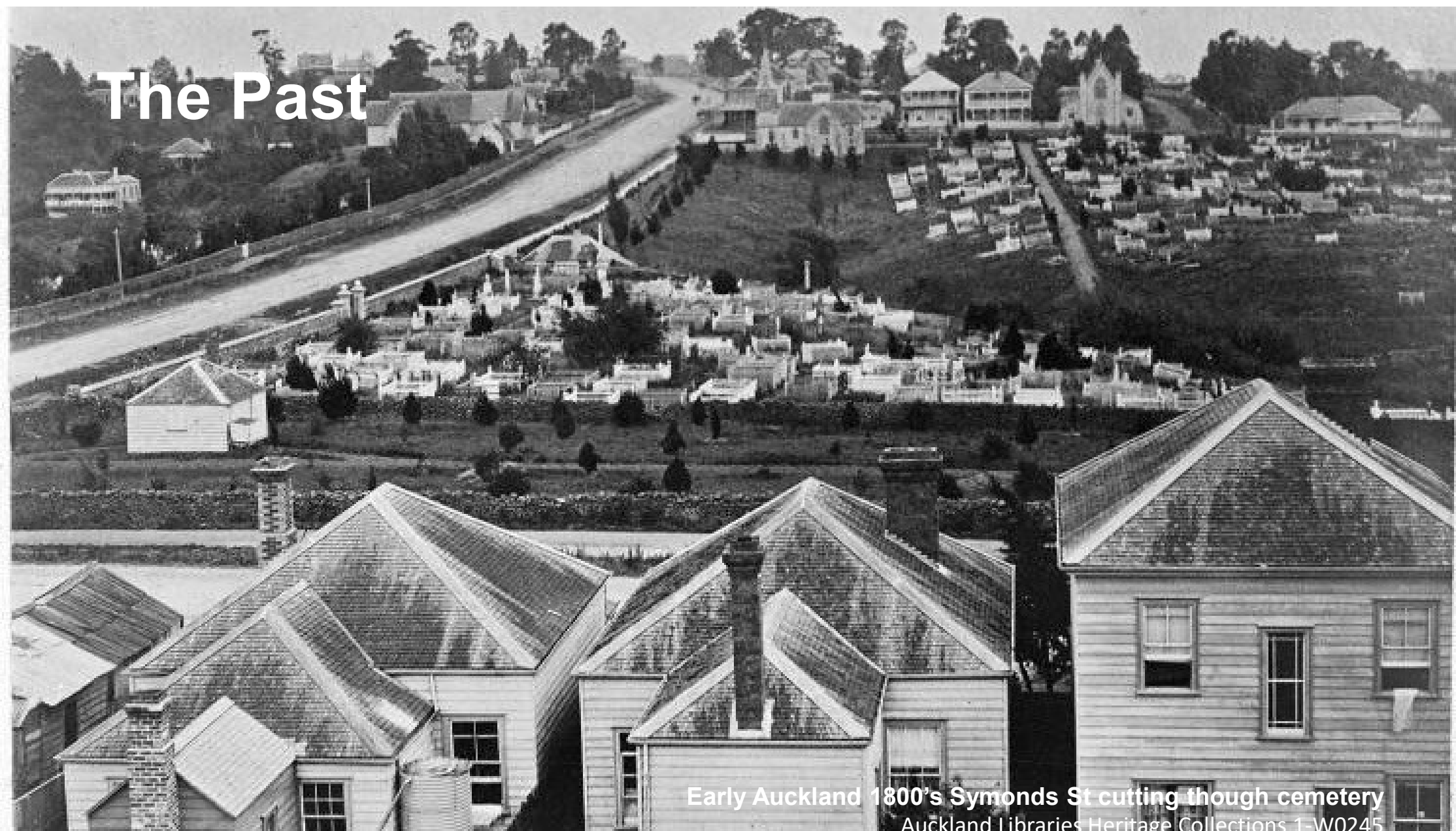
# Our Journey



Past

~~Roads~~  
**BEDS *R* US**

# The Past

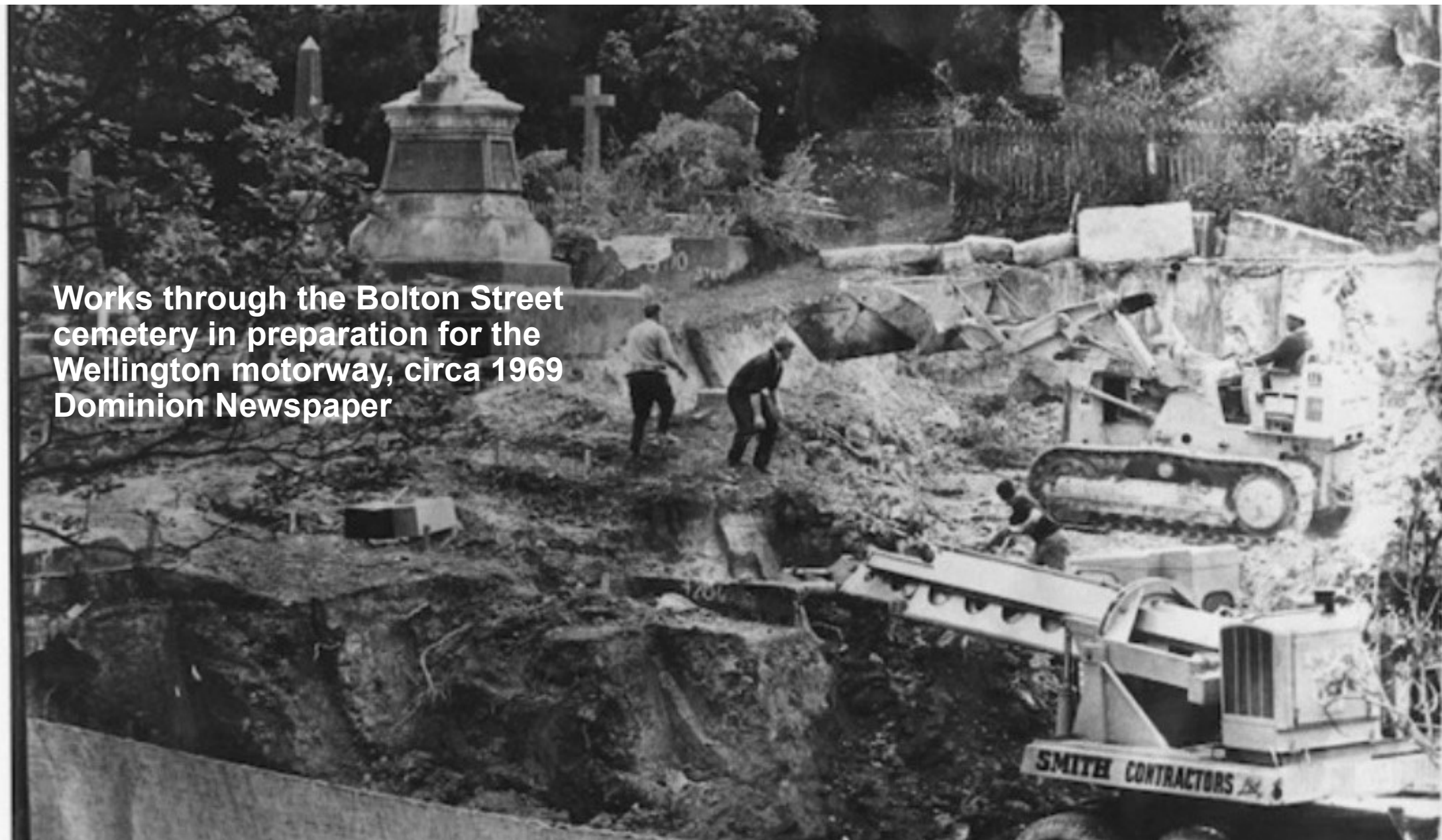


Early Auckland 1800's Symonds St cutting through cemetery

Auckland Libraries Heritage Collections 1-W0245



**Works through the Bolton Street  
cemetery in preparation for the  
Wellington motorway, circa 1969  
Dominion Newspaper**





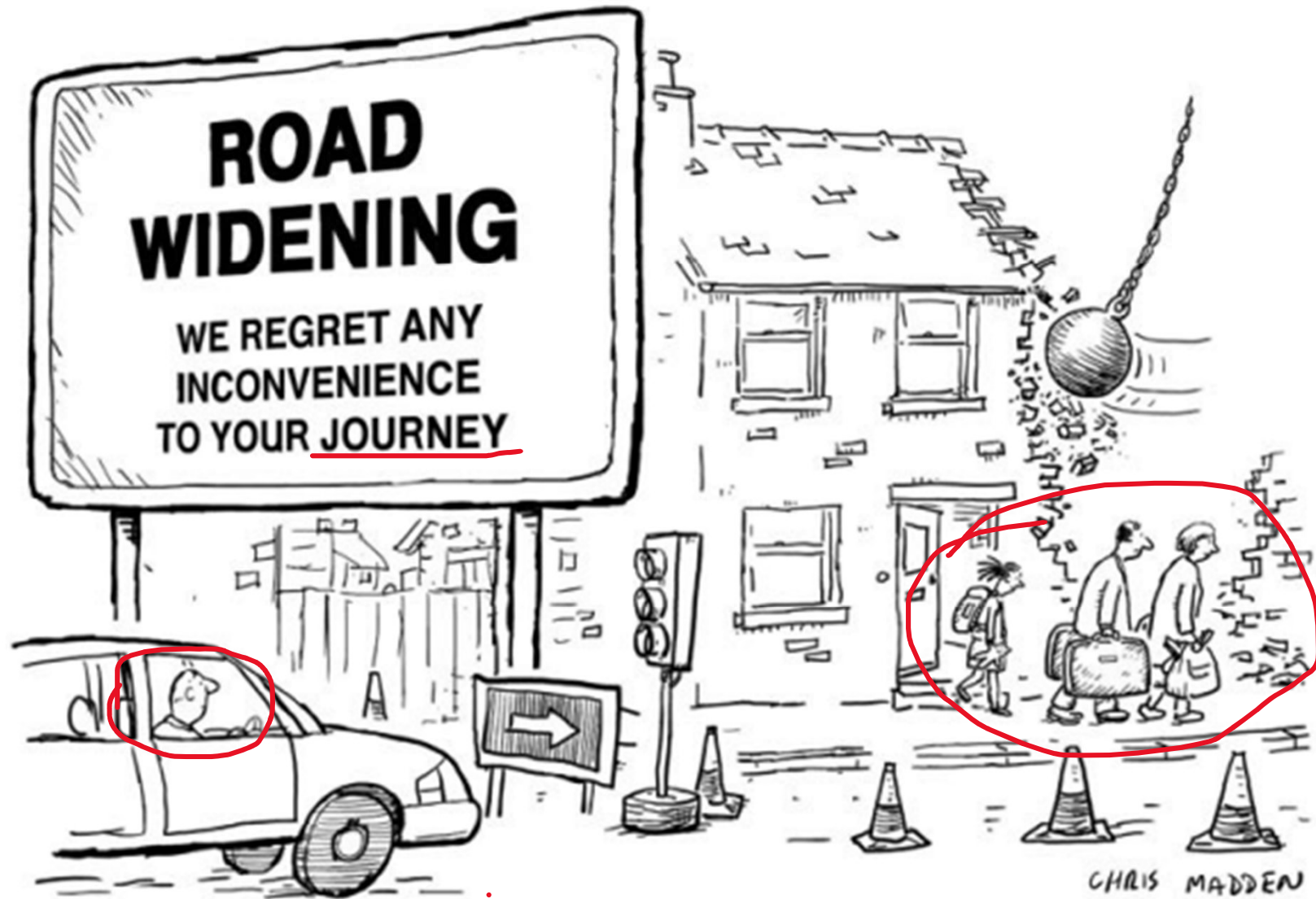
**Auckland Harbour Bridge construction October 1958**

Archives NZ [BBBW 4620/2a](#)



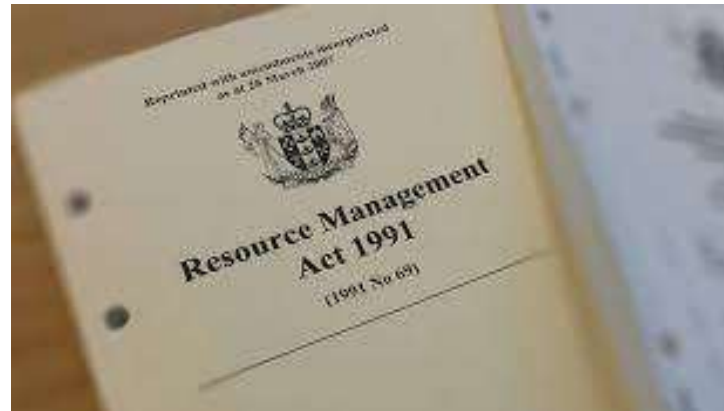
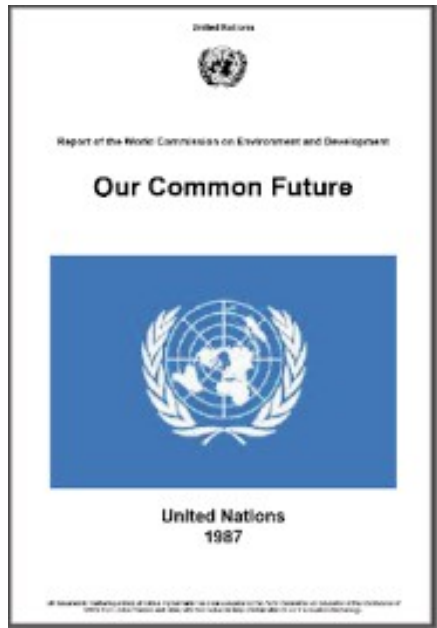
Construction of Auckland's northern motorway, around 1956  
Te Ara The Encyclopaedia of NZ





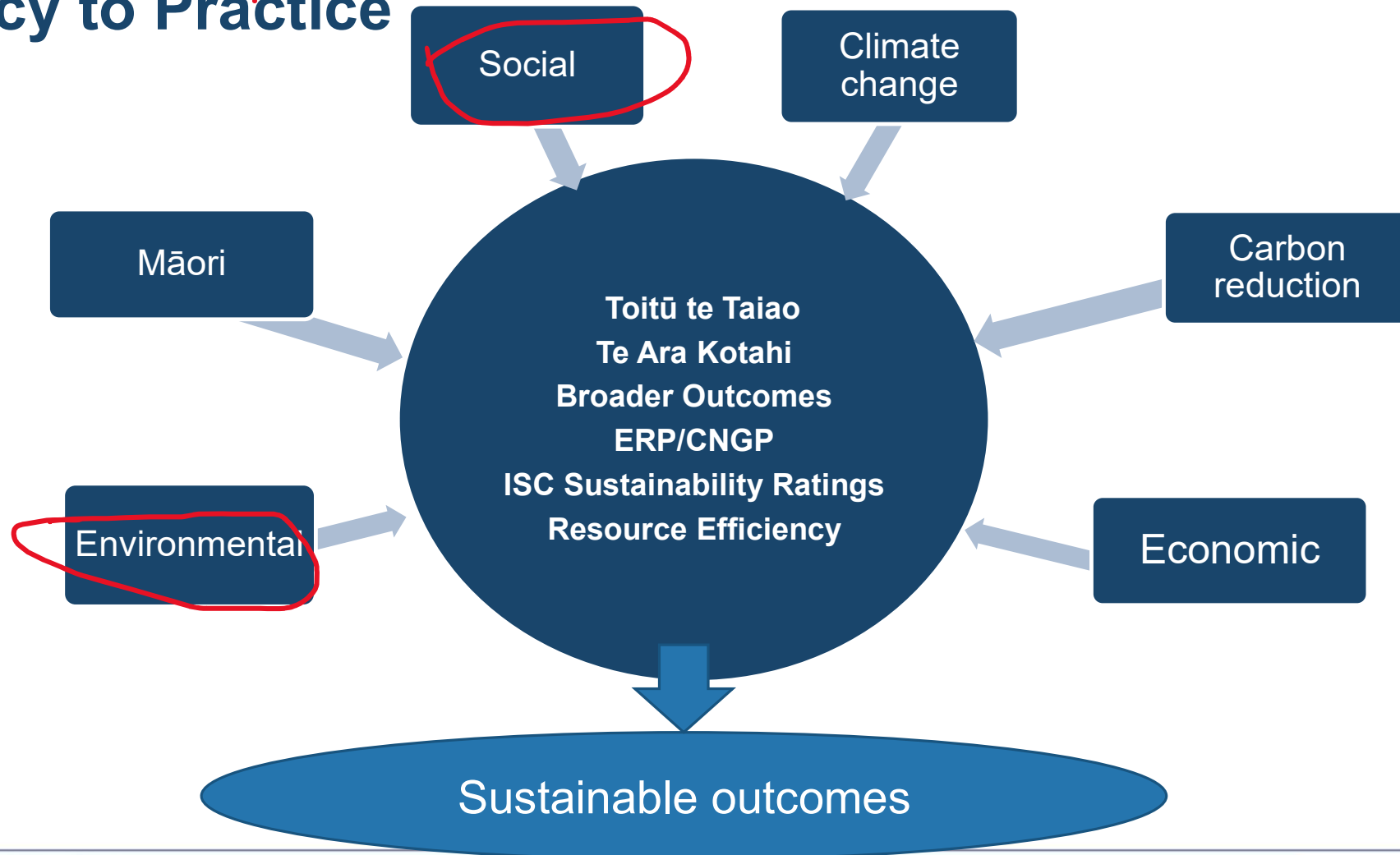


# People, Projects, Protest, and Policy Collided





# Policy to Practice



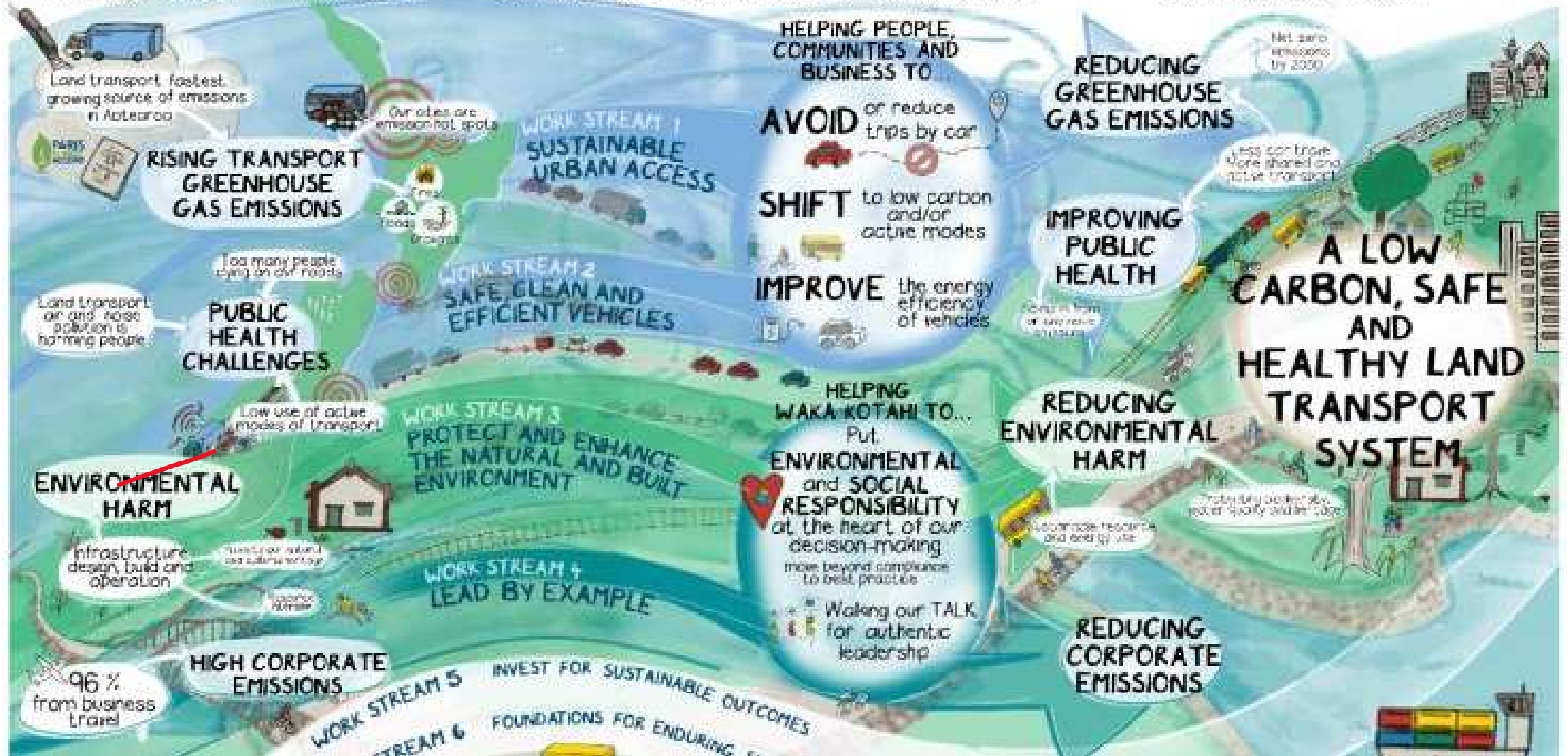


# TOITŪ TE TAIAO OUR SUSTAINABILITY ACTION PLAN

We are focusing on 4 challenges...

and working with partners on 6 workstreams...

to achieve our Vision



# Sustainability Outcomes – ISC Rating



- Waka Kotahi adopted ISC sustainability rating 2020
- ISC drives, measures and recognises sustainability performance and outcomes across a range of sustainability areas (environmental, social, governance, economic)
- Sustainability rating now a “must have” on all new Projects > \$100M



# Social Outcomes - more than just a bridge

## Old Mangere Bridge Replacement, Auckland





# Social Outcomes - using the leftovers

## Christchurch Northern Corridor, Canterbury



# Economic & Social Outcomes

## Te Ahu a Turanga (Manawatu)



**Jobs and Training Open Day**

**Help Build The Highway!**  
Join one of New Zealand's most important projects!

 **Bring Your CV!**  **Bring Your Whānau**

Register your interest at our Jobs and Training Open Day on

**Sunday 4 October**

**Dannevirke Sports Centre**  
Anderson St, Dannevirke 9am to Midday

**Ashhurst Pohangina Rugby Club**  
Lincoln Street, Ashhurst 2pm to 5pm

 **WAKA KOTAHI**  
NZ TRANSPORT AGENCY

**Te Ahu a Turanga**  
Manawātū Tararua Highway



# Community & Culture – designing for the community

State Highway 10 Taipa Bridge, Northland





# Training opportunities

Peka Peka to Otaki provides film work experience for senior students



# Community & Culture - optimising infrastructure

Northern Corridor Tirohanga Whānui Bridge, North Shore



# From Policy to Practice





# Social outcomes and SIA certification - CEnvP



- Specialist SIA Certification launched on 28<sup>th</sup> of October 2022
- First of its kind globally
- More information on our poster and sponsor stand

Copyright CEnvP Scheme 2022

# THE FUTURE

## Challenges

- Still early in the journey
- Building capability
- Integration

## Opportunities

- Collaborating with Māori & industry
- Innovation
- Optimising our outcomes



# Pātai/Questions

FUTURA  
PRESENT  
PAST